

# Fact Book 2015 3Q



## 【連結 Consolidated】

(2015年3月期 第3四半期決算データ) For the third quarter of the fiscal year ending March 31, 2015

		Page
<b>1. 業績の概要</b>	<b>Results of operations</b>	
(1) 業績	Results of operations	1
(2) 利益率	Income ratio	1
<b>2. 売上</b>	<b>Sales</b>	
(1) セグメント別売上高	Sales by segment	2
(2) 地域別売上高	Sales by region	2
<b>3. 売上原価・販管費・営業利益</b>	<b>Cost of sales/Selling, general and administrative expenses/Operating income</b>	
(1) 売上原価・販管費・営業利益	Cost of sales/Selling, general and administrative expenses/Operating income	3
(2) 売上原価率・販管費比率	Cost of sales as % of net sales/Selling, general and administrative expenses as % of net sales	3
<b>4. 設備投資額・減価償却費</b>	<b>Capital expenditures/Depreciation</b>	
(1) 設備投資額	Capital expenditures	4
(2) 当期純利益・減価償却費と設備投資の関係	Net income, depreciation and capital expenditures	4
<b>5. 研究開発費</b>	<b>Research and development costs</b>	
研究開発費	Research and development costs	5
<b>6. その他</b>	<b>Others</b>	
(1) 従業員数・研究開発人員数	Number of employees/Number of R&D employees	5
(2) 為替レート	Foreign exchange rate	6
(3) 棚卸資産	Inventories	6
(4) 自己資本・総資産	Shareholders' equity/Total assets	7
(5) 1株当たり当期純利益・1株当たり純資産	Net income per share/Net assets per share	7
<b>データ集</b>	<b>Data</b>	8-10

## 貸借対照表・損益計算書及び包括利益計算書の推移 3-year Summary of B/S and P/L

11-13

- (注) 1. 当資料は投資分析を目的として作成しておりますので、投資分析にのみご使用ください。
2. 当資料の2Q、3Q及び4Qの期間損益と係る数値については、当該四半期累計値から前四半期累計値を差し引いたものであり、四半期報告書に記載している数値と若干異なる場合があります。
3. 2015年3月期の予想は、2014年11月6日の業績予想公表時点で得られた情報に基づいて算定しております。従って、実際の業績は業況の変化などにより記載の予想とは大きく異なる場合があります。

Note: 1. This data is prepared for investors investigation.

Please pay attention to use this data only for investment analysis.

2. Profit & loss and related figures of 2Q, 3Q and 4Q on this data might be different from those on the other Quartely report because the figures on this date were calculated by deducting the cumulative total at the last term from those at this term.
3. The forecasts for the fiscal year ending March 31, 2015 are as of November 6, 2014 when the forecasts were announced, and based upon assumptions which the company considers reasonable at that time.
- Actual results may differ considerably by the changes of environment and so forth.

## ローム株式会社

広報IR室

〒615-8585 京都市右京区西院溝崎町21  
Tel: (075) 315-5729 Fax: (075) 311-1363

## ROHM Co., Ltd.

Public Relations and  
Investor Relations Div.

21, Saiin Mizosaki-cho, Ukyo-ku,

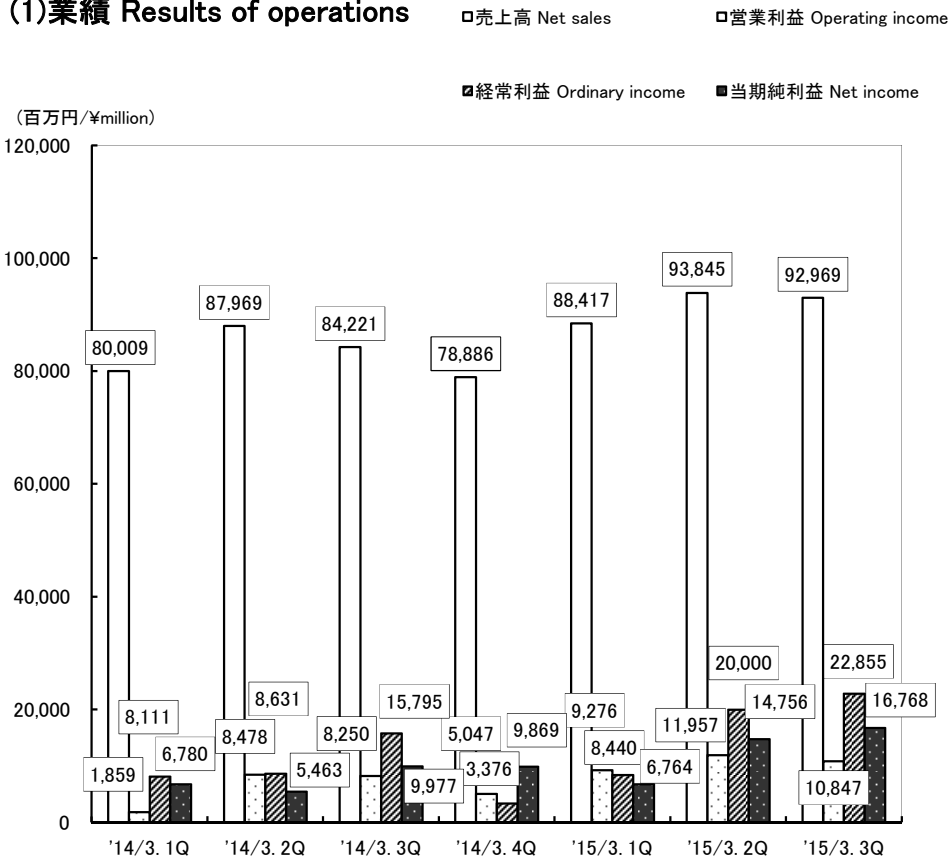
Kyoto 615-8585, Japan

Tel: +81 (75) 315-5729 Fax: +81 (75) 311-1363

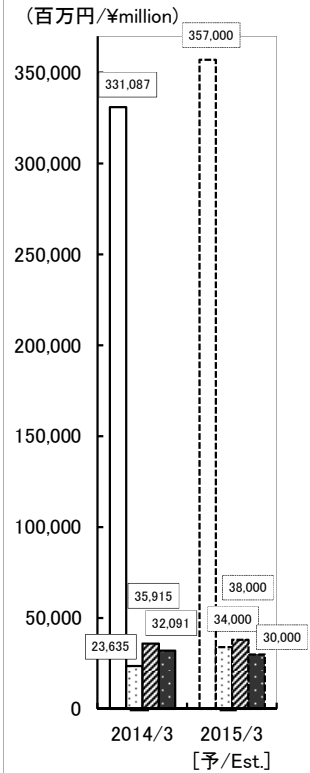
# 1.業績の概要 Results of Operations

【連結 Consolidated】

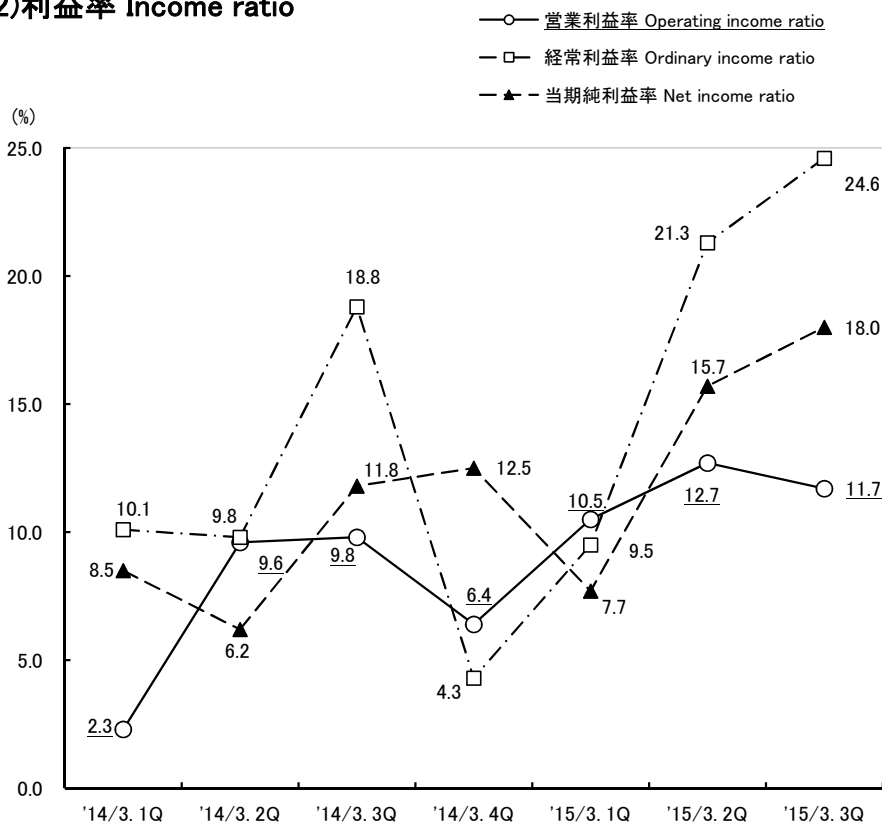
## (1)業績 Results of operations



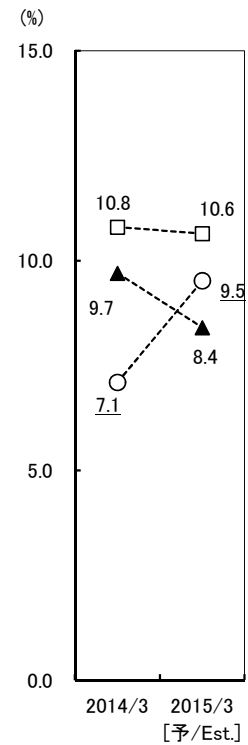
## 通期別推移 Annual trend



## (2)利益率 Income ratio



## 通期別推移 Annual trend

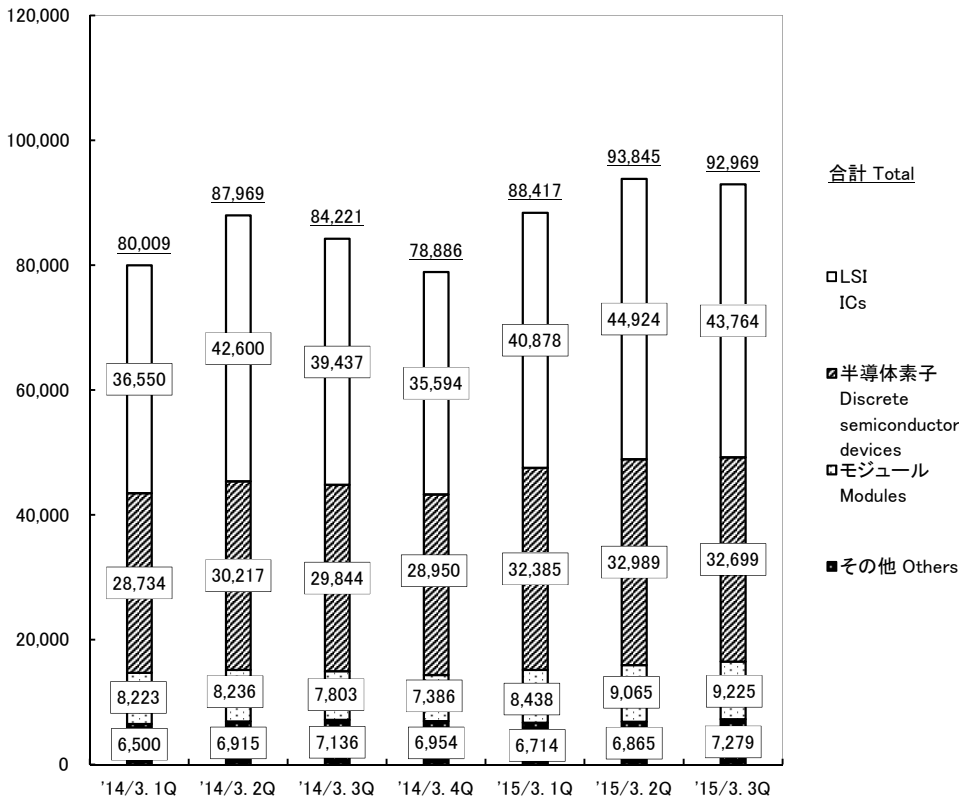


## 2.売上 Sales

## 【連結 Consolidated】

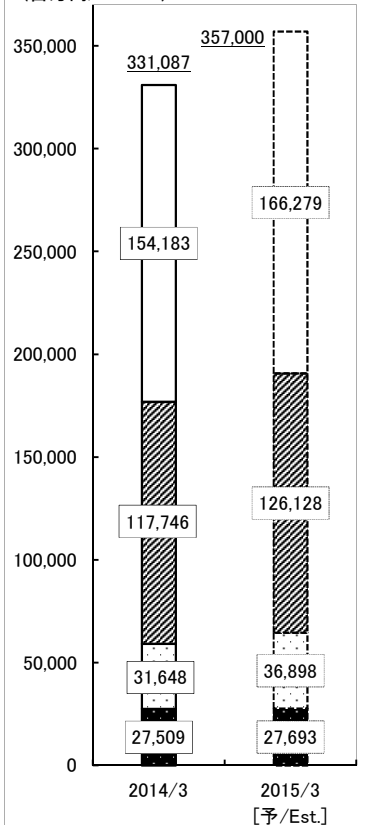
### (1)セグメント別売上高 Sales by segment

(百万円/¥million)



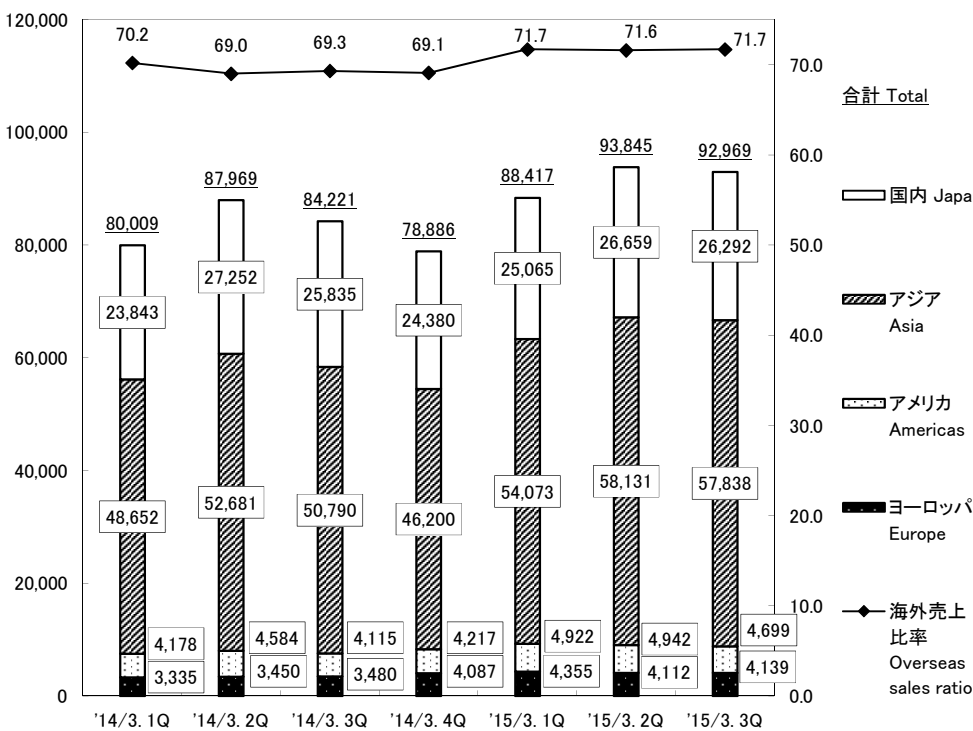
### 通期別推移

Annual trend  
(百万円/¥million)



### (2)地域別売上高 Sales by region

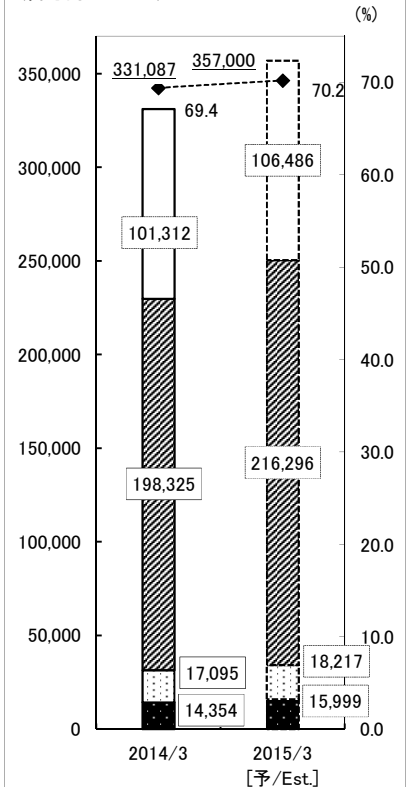
(百万円/¥million)



### 通期別推移

Annual trend

(百万円/¥million)



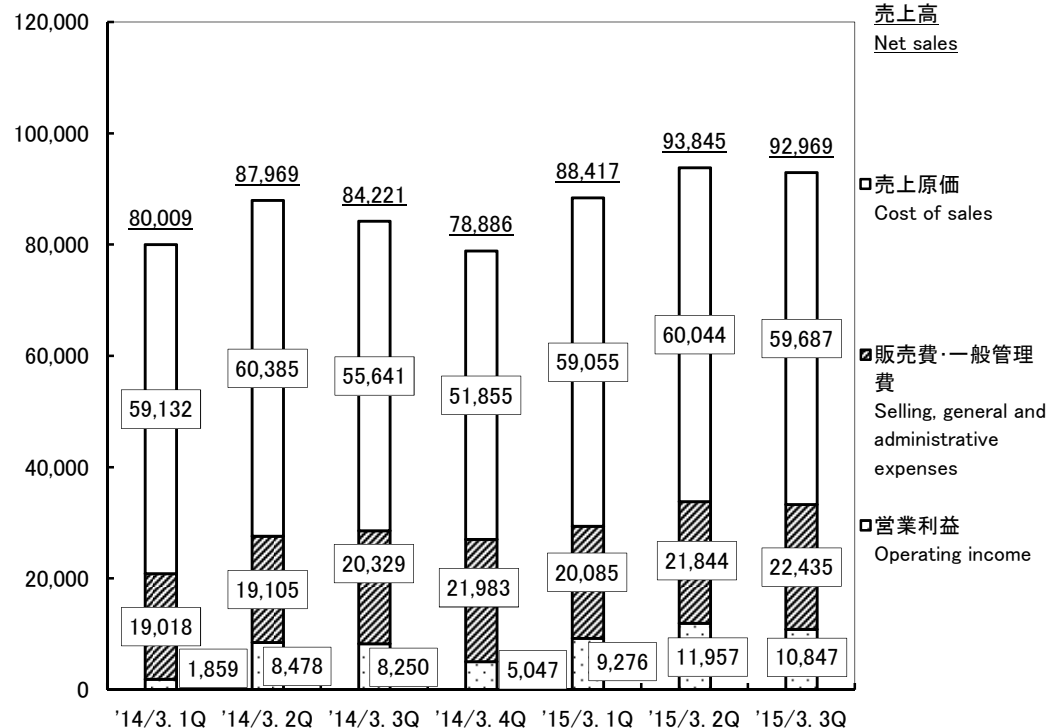
### 3.売上原価・販管費・営業利益

【連結 Consolidated】

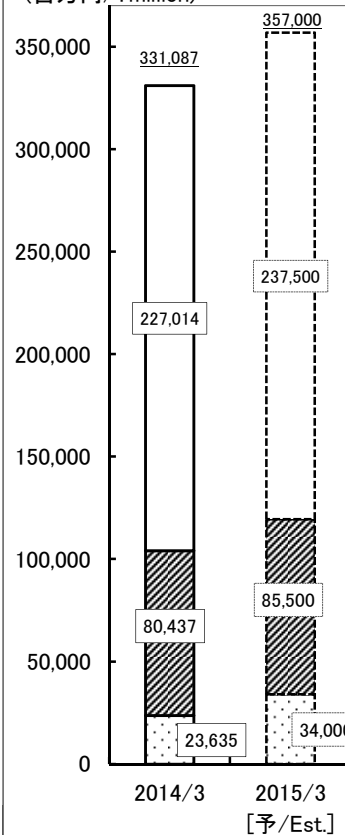
Cost of sales/Selling, general and administrative expenses / Operating income

#### (1) 売上原価・販管費・営業利益 Cost of sales/Selling, general and administrative expenses/Operating income

(百万円/¥million)



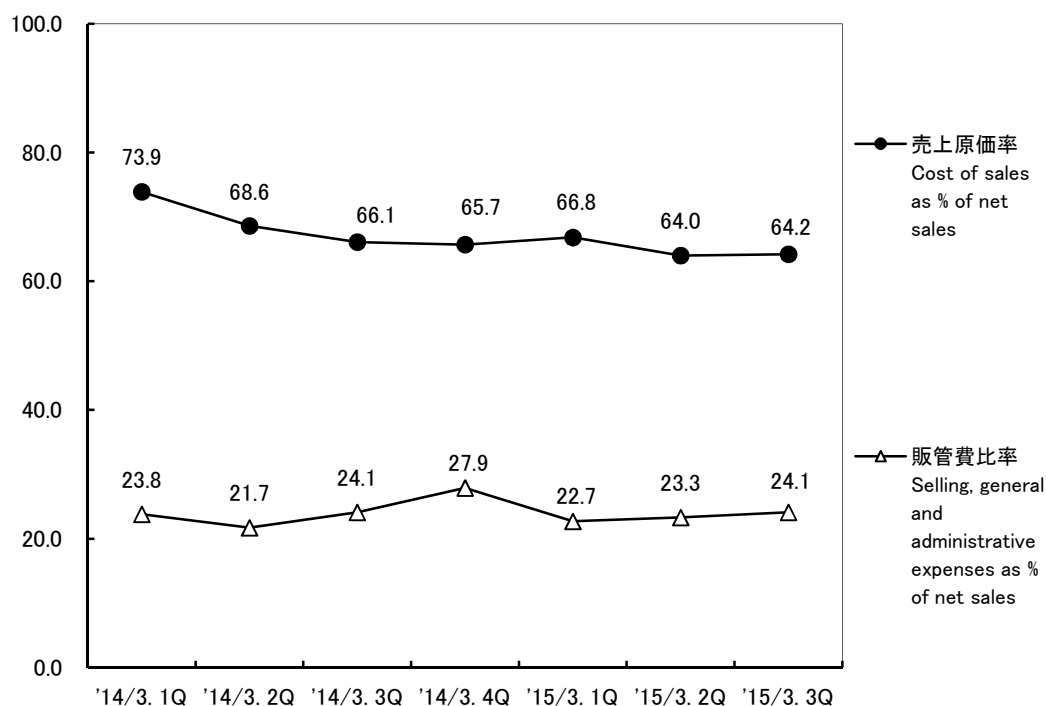
#### 通期別推移 Annual trend (百万円/¥million)



#### (2) 売上原価率・販管費比率

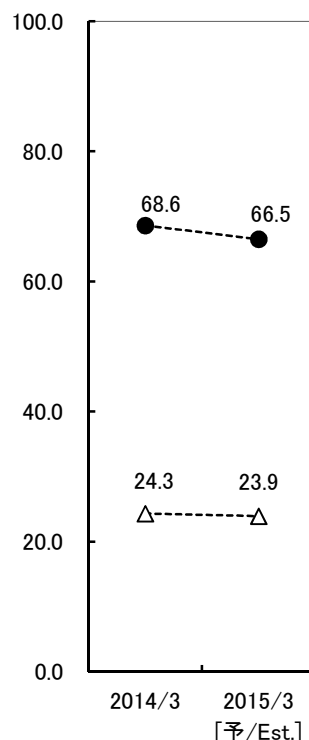
Cost of sales as % of net sales / Selling, general and administrative expenses as % of net sales

(%)



#### 通期別推移 Annual trend

(%)

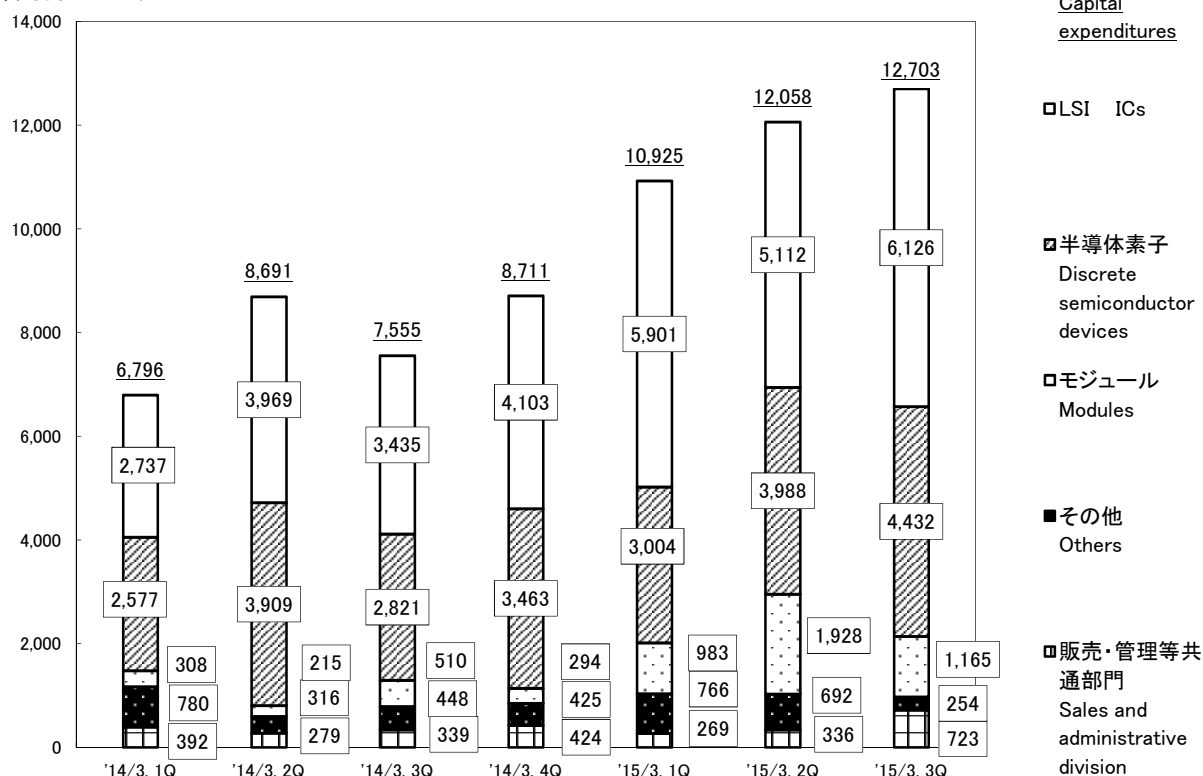


#### 4.設備投資額・減価償却費 Capital expenditures/Depreciation

【連結 Consolidated】

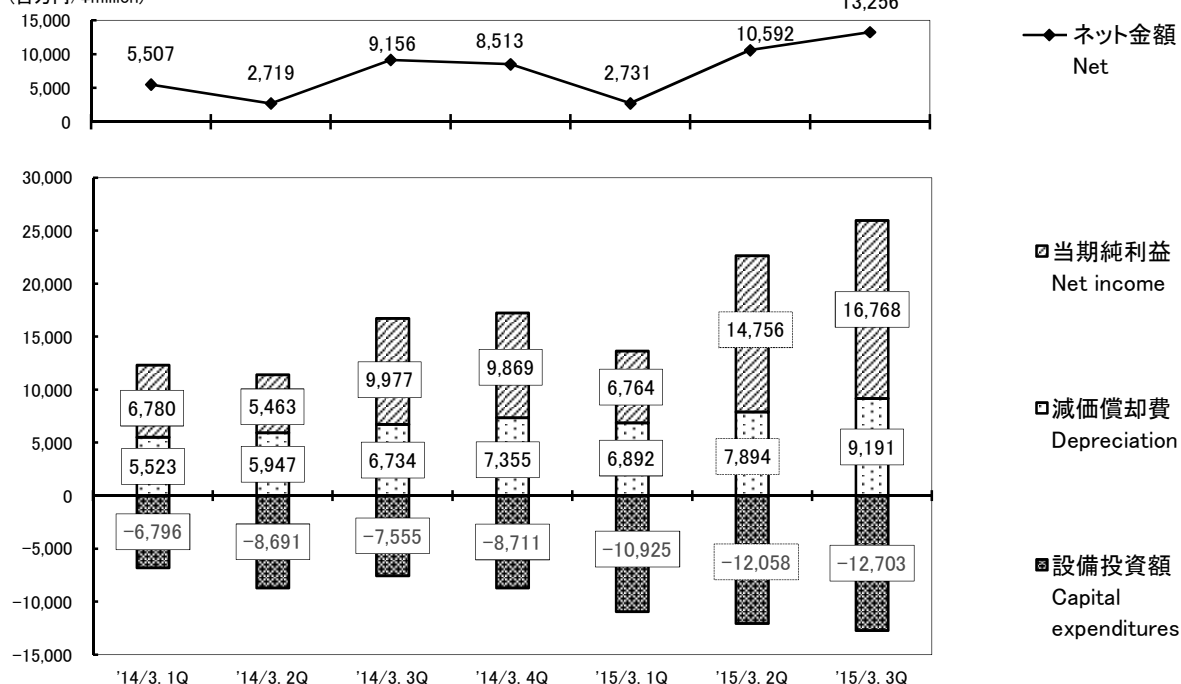
##### (1)設備投資額 Capital expenditures

(百万円/¥million)



##### (2) 当期純利益・減価償却費と設備投資の関係 Net income, depreciation and capital expenditures

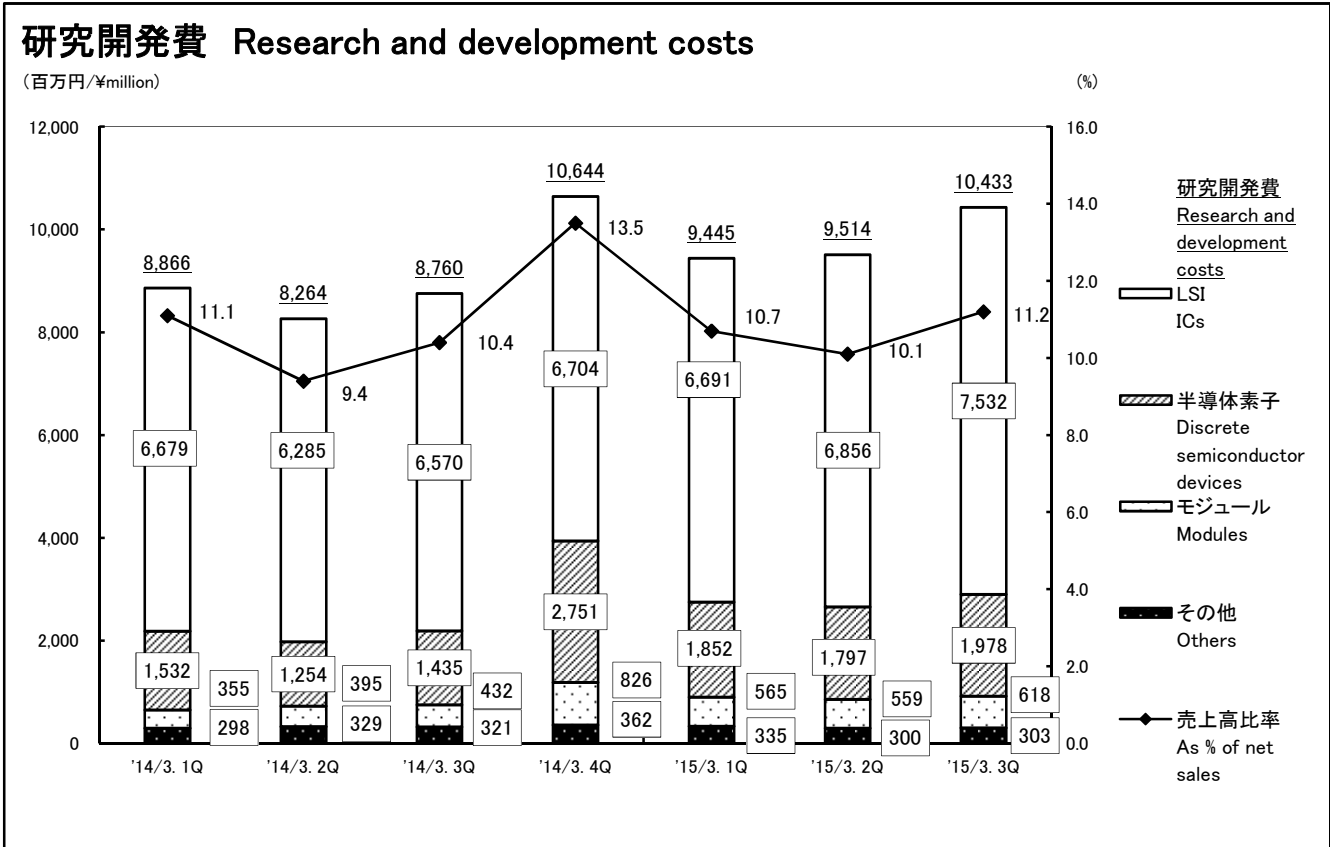
(百万円/¥million)



# 5.研究開発費

【連結 Consolidated】

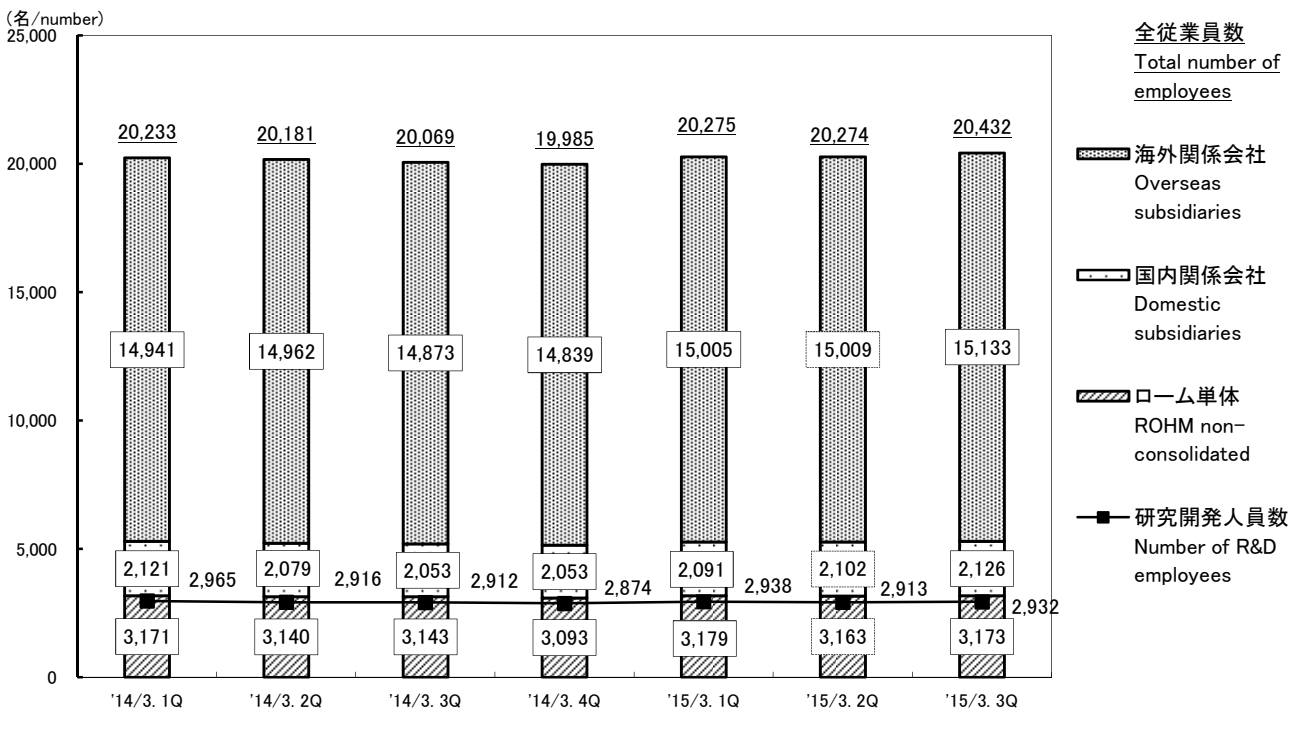
## Research and development costs



# 6.その他 Others

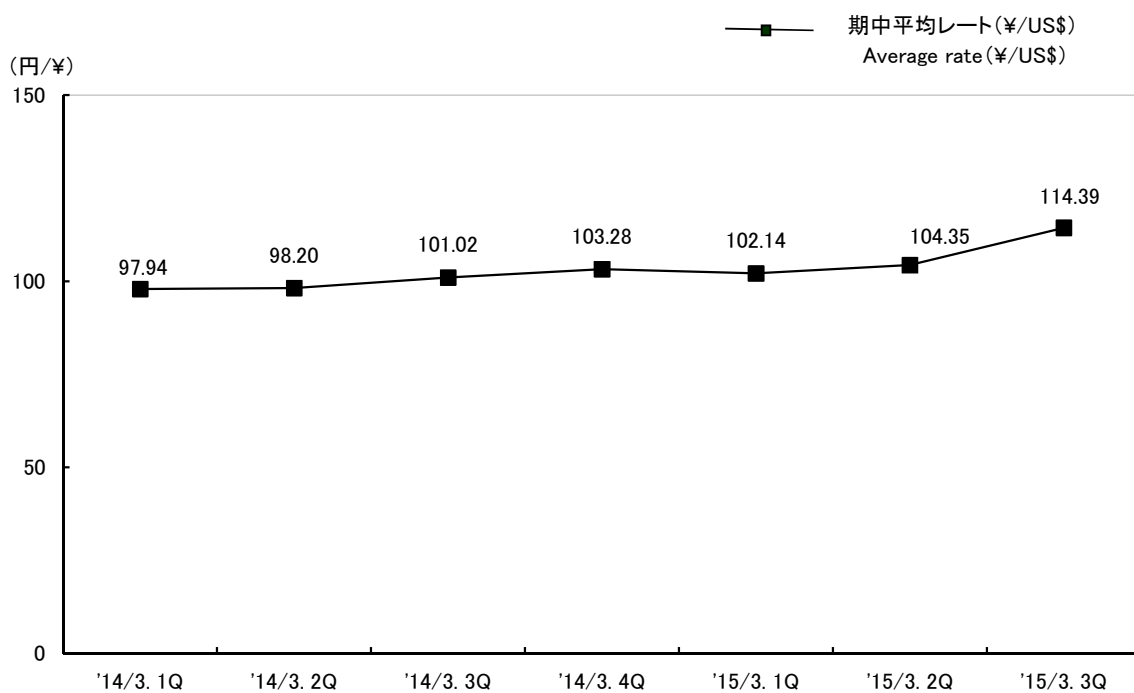
## (1)従業員数・研究開発人員数

### Number of employees/Number of R&D employees



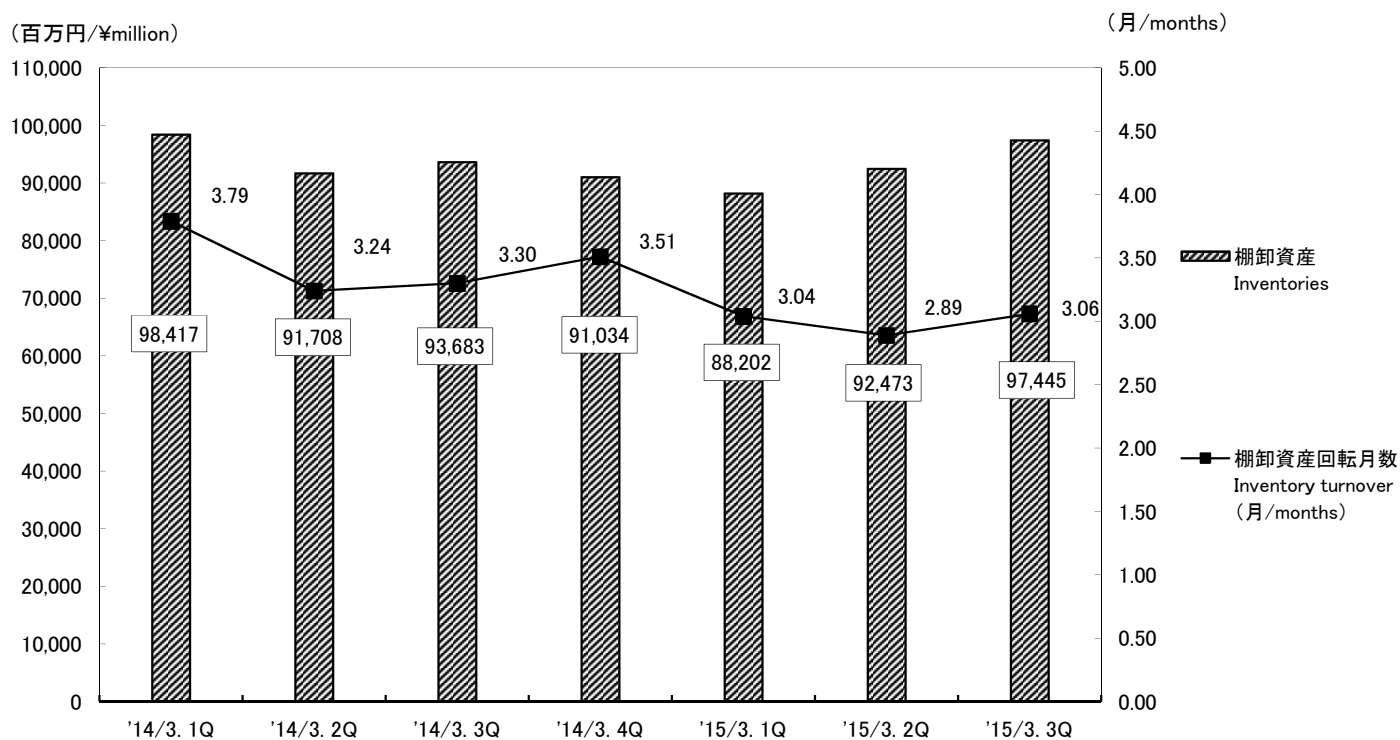
(2)為替レート

Foreign exchange rate



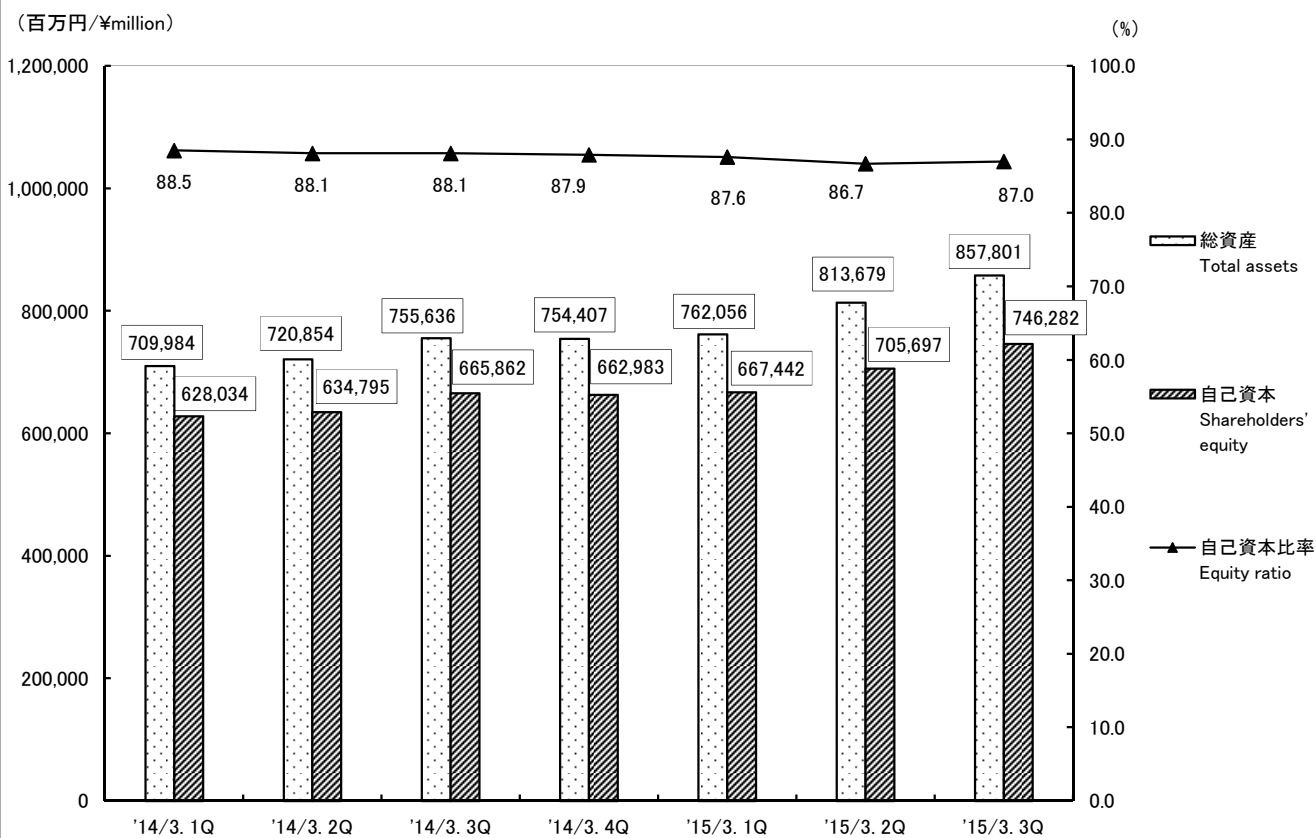
(3)棚卸資産

Inventories



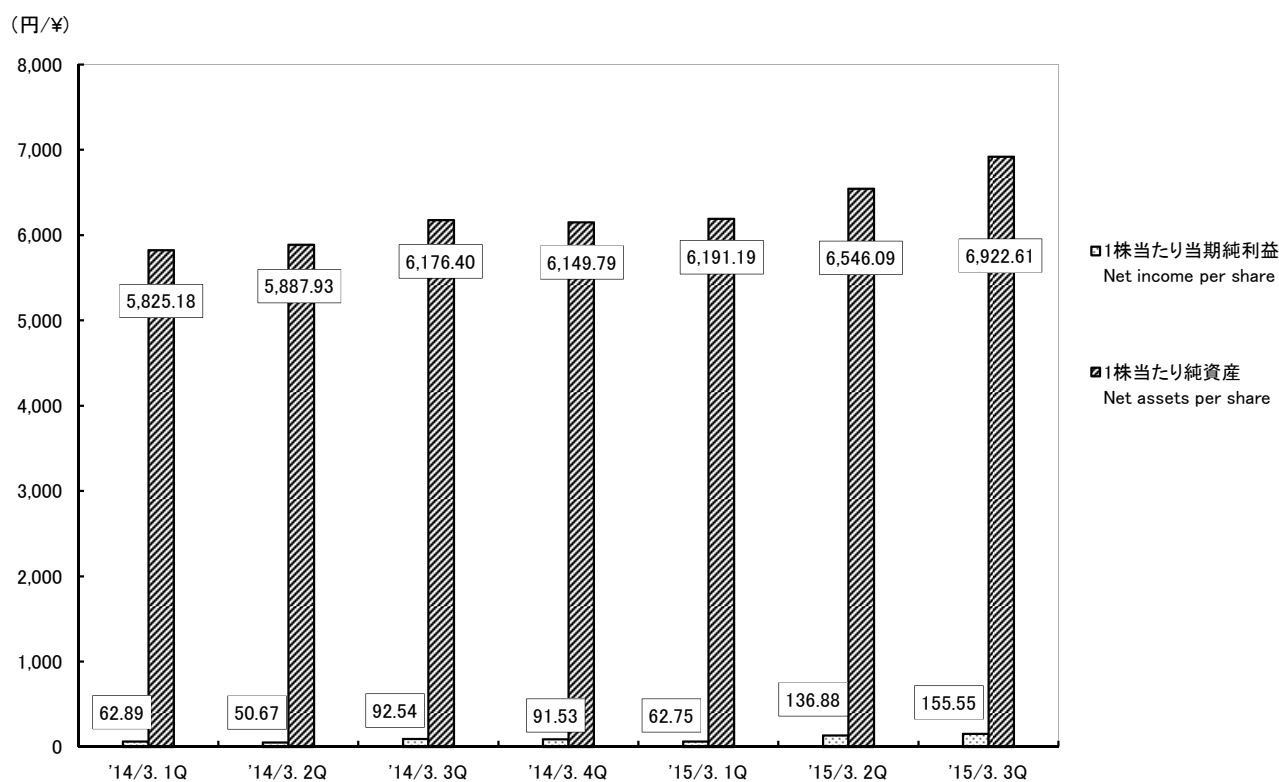
## (4) 自己資本・総資産

## Shareholders' equity/Total assets



## (5) 1株当たり当期純利益・1株当たり純資産

## Net income per share/Net assets per share





## 1-(1) 業績 Results of operations

年度 Fiscal year ended	(百万円/¥million)											
	2013/3				2014/3				2015/3			
	1Q	2Q	3Q	4Q	1Q	2Q	3Q	4Q	1Q	2Q	3Q	
売上高 Net sales	74,330	76,423	70,520	71,136	80,009	87,969	84,221	78,886	88,417	93,845	92,969	
営業利益 Operating income	1,357	1,285	-440	-3,123	1,859	8,478	8,250	5,047	9,276	11,957	10,847	
経常利益 Ordinary income	227	124	8,426	3,007	8,111	8,631	15,795	3,376	8,440	20,000	22,855	
当期純利益 Net income	10	-182	2,531	-54,824	6,780	5,463	9,977	9,869	6,764	14,756	16,768	

## 1-(2) 利益率 Income ratio

年度 Fiscal year ended	(%)											
	2013/3				2014/3				2015/3			
	1Q	2Q	3Q	4Q	1Q	2Q	3Q	4Q	1Q	2Q	3Q	
営業利益率 Operating income ratio	1.8	1.7	-0.6	-4.4	2.3	9.6	9.8	6.4	10.5	12.7	11.7	
経常利益率 Ordinary income ratio	0.3	0.2	11.9	4.2	10.1	9.8	18.8	4.3	9.5	21.3	24.6	
当期純利益率 Net income ratio	0.0	-0.2	3.6	-77.1	8.5	6.2	11.8	12.5	7.7	15.7	18.0	

## 2-(1) セグメント別売上高 Sales by segment

年度 Fiscal year ended	(百万円/¥million)											
	2013/3				2014/3				2015/3			
	1Q	2Q	3Q	4Q	1Q	2Q	3Q	4Q	1Q	2Q	3Q	
合計 Total	74,330	76,423	70,520	71,136	80,009	87,969	84,221	78,886	88,417	93,845	92,969	
LSI ICs	35,770	37,469	33,885	33,635	36,550	42,600	39,437	35,594	40,878	44,924	43,764	
半導体素子 Discrete semiconductor devices	25,242	25,612	23,894	24,624	28,734	30,217	29,844	28,950	32,385	32,989	32,699	
モジュール Modules	7,123	7,385	6,719	7,025	8,223	8,236	7,803	7,386	8,438	9,065	9,225	
その他 Others	6,193	5,956	6,021	5,850	6,500	6,915	7,136	6,954	6,714	6,865	7,279	

## 2-(2) 地域別売上高 Sales by region

年度 Fiscal year ended	(百万円/¥million)											
	2013/3				2014/3				2015/3			
	1Q	2Q	3Q	4Q	1Q	2Q	3Q	4Q	1Q	2Q	3Q	
海外売上比率 Overseas sales ratio(%)	62.5	63.9	65.0	67.7	70.2	69.0	69.3	69.1	71.7	71.6	71.7	
国内 Japan	27,896	27,574	24,710	22,957	23,843	27,252	25,835	24,380	25,065	26,659	26,292	
アジア Asia	40,793	43,397	40,432	41,847	48,652	52,681	50,790	46,200	54,073	58,131	57,838	
アメリカ Americas	3,220	3,259	2,929	3,442	4,178	4,584	4,115	4,217	4,922	4,942	4,699	
ヨーロッパ Europe	2,419	2,191	2,448	2,889	3,335	3,450	3,480	4,087	4,355	4,112	4,139	

## 3-(1) 売上原価・販管費・営業利益

## Cost of sales/Selling, general and administrative expenses/Operating income

年度 Fiscal year ended	(百万円/¥million)											
	2013/3				2014/3				2015/3			
	1Q	2Q	3Q	4Q	1Q	2Q	3Q	4Q	1Q	2Q	3Q	
売上高 Net sales	74,330	76,423	70,520	71,136	80,009	87,969	84,221	78,886	88,417	93,845	92,969	
売上原価 Cost of sales	52,728	55,629	50,886	54,030	59,132	60,385	55,641	51,855	59,055	60,044	59,687	
販売費・一般管理費 Selling, general and administrative expenses	20,244	19,507	20,075	20,228	19,018	19,105	20,329	21,983	20,085	21,844	22,435	
営業利益 Operating income	1,357	1,285	-440	-3,123	1,859	8,478	8,250	5,047	9,276	11,957	10,847	

## 3-(2) 売上原価率・販管費比率

## Cost of sales as % of net sales/Selling, general and administrative expenses as % of net sales

年度 Fiscal year ended	(%)											
	2013/3				2014/3				2015/3			
	1Q	2Q	3Q	4Q	1Q	2Q	3Q	4Q	1Q	2Q	3Q	
売上原価率 Cost of sales as % of net sales	70.9	72.8	72.2	76.0	73.9	68.6	66.1	65.7	66.8	64.0	64.2	
販管費比率 Selling, general and administrative expenses as % of net sales	27.2	25.5	28.5	28.4	23.8	21.7	24.1	27.9	22.7	23.3	24.1	

## 4-(1) 設備投資額 Capital expenditures

年度 Fiscal year ended	(百万円/¥million)											
	2013/3				2014/3				2015/3			
	1Q	2Q	3Q	4Q	1Q	2Q	3Q	4Q	1Q	2Q	3Q	
設備投資額 Capital expenditures	9,930	12,638	9,263	10,985	6,796	8,691	7,555	8,711	10,925	12,058	12,703	
LSI ICs	2,607	4,088	3,755	4,600	2,737	3,969	3,435	4,103	5,901	5,112	6,126	
半導体素子 Discrete semiconductor devices	3,653	4,574	2,790	3,931	2,577	3,909	2,821	3,463	3,004	3,988	4,432	
モジュール Modules	170	276	240	92	308	215	510	294	983	1,928	1,165	
その他 Others	2,721	2,278	814	97	780	316	448	425	766	692	254	
販売・管理等共通部門 Sales and administrative division	777	1,420	1,661	2,264	392	279	339	424	269	336	723	

## 4-(2) 当期純利益・減価償却費と設備投資の関係 Net income, depreciation and capital expenditures

年度 Fiscal year ended	(百万円/¥million)											
	2013/3				2014/3				2015/3			
	1Q	2Q	3Q	4Q	1Q	2Q	3Q	4Q	1Q	2Q	3Q	
ネット金額 Net	-1,346	-3,684	3,418	-54,790	5,507	2,719	9,156	8,513	2,731	10,592	13,256	
当期純利益 Net income	10	-182	2,531	-54,824	6,780	5,463	9,977	9,869	6,764	14,756	16,768	
減価償却費 Depreciation	8,574	9,136	10,150	11,019	5,523	5,947	6,734	7,355	6,892	7,894	9,191	
設備投資額 Capital expenditures	-9,930	-12,638	-9,263	-10,985	-6,796	-8,691	-7,555	-8,711	-10,925	-12,058	-12,703	

## 5 研究開発費 Research and development costs

(百万円/¥million)

年度 Fiscal year ended	2013/3				2014/3				2015/3		
	1Q	2Q	3Q	4Q	1Q	2Q	3Q	4Q	1Q	2Q	3Q
売上高比率 As % of net sales(%)	12.9	12.1	13.4	13.2	11.1	9.4	10.4	13.5	10.7	10.1	11.2
研究開発費 Research and development costs	9,585	9,283	9,467	9,414	8,866	8,264	8,760	10,644	9,445	9,514	10,433
LSI ICs	6,609	6,349	6,459	6,190	6,679	6,285	6,570	6,704	6,691	6,856	7,532
半導体素子 Discrete semiconductor devices	2,071	1,994	2,083	2,402	1,532	1,254	1,435	2,751	1,852	1,797	1,978
モジュール Modules	486	555	592	529	355	395	432	826	565	559	618
その他 Others	418	384	331	291	298	329	321	362	335	300	303

## 6-(1) 従業員数・研究開発人員数 Number of employees/Number of R&amp;D employees

(名/number)

年度 Fiscal year ended	2013/3				2014/3				2015/3		
	1Q	2Q	3Q	4Q	1Q	2Q	3Q	4Q	1Q	2Q	3Q
全従業員数 Total number of employees	21,388	21,120	20,963	20,203	20,233	20,181	20,069	19,985	20,275	20,274	20,432
海外関係会社 Overseas subsidiaries	15,357	15,325	15,235	14,934	14,941	14,962	14,873	14,839	15,005	15,009	15,133
国内関係会社 Domestic subsidiaries	2,526	2,370	2,348	2,141	2,121	2,079	2,053	2,053	2,091	2,102	2,126
ローム単体 ROHM non-consolidated	3,505	3,425	3,380	3,128	3,171	3,140	3,143	3,093	3,179	3,163	3,173
研究開発人員数 Number of R&D employees	3,274	3,164	3,164	2,966	2,965	2,916	2,912	2,874	2,938	2,913	2,932

## 6-(2) 為替レート Foreign exchange rate

(円/¥)

年度 Fiscal year ended	2013/3				2014/3				2015/3		
	1Q	2Q	3Q	4Q	1Q	2Q	3Q	4Q	1Q	2Q	3Q
期中平均レート(¥/US\$) Average rate	80.40	78.42	81.49	91.07	97.94	98.20	101.02	103.28	102.14	104.35	114.39

## 6-(3) 棚卸資産 Inventories

(百万円/¥million)

年度 Fiscal year ended	2013/3				2014/3				2015/3		
	1Q	2Q	3Q	4Q	1Q	2Q	3Q	4Q	1Q	2Q	3Q
棚卸資産 Inventories	92,893	93,205	102,775	103,545	98,417	91,708	93,683	91,034	88,202	92,473	97,445
棚卸資産回転月数 Inventory turnover (月/months)	3.76	3.65	4.17	4.35	3.79	3.24	3.30	3.51	3.04	2.89	3.06

## 6-(4) 自己資本・総資産 Shareholders' equity/Total assets

(百万円/¥million)

年度 Fiscal year ended	2013/3				2014/3				2015/3		
	1Q	2Q	3Q	4Q	1Q	2Q	3Q	4Q	1Q	2Q	3Q
総資産 Total assets	705,187	697,762	725,418	699,014	709,984	720,854	755,636	754,407	762,056	813,679	857,801
自己資本 Shareholders' equity	615,797	614,120	643,697	613,270	628,034	634,795	665,862	662,983	667,442	705,697	746,282
自己資本比率 Equity ratio (%)	87.3	88.0	88.7	87.7	88.5	88.1	88.1	87.9	87.6	86.7	87.0

## 6-(5) 1株当たり当期純利益・1株当たり純資産 Net income per share/Net assets per share

(円/¥)

年度 Fiscal year ended	2013/3				2014/3				2015/3		
	1Q	2Q	3Q	4Q	1Q	2Q	3Q	4Q	1Q	2Q	3Q
1株当たり当期純利益 Net income per share	0.10	-1.69	23.48	-508.52	62.89	50.67	92.54	91.53	62.75	136.88	155.55
1株当たり純資産 Net assets per share	5,711.63	5,696.09	5,970.43	5,688.21	5,825.18	5,887.93	6,176.40	6,149.79	6,191.19	6,546.09	6,922.61

## セグメント別利益 Profit by segment

(百万円/¥million)

年度 Fiscal year ended	2013/3				2014/3				2015/3		
	1Q	2Q	3Q	4Q	1Q	2Q	3Q	4Q	1Q	2Q	3Q
合計 Total	1,357	1,285	-440	-3,123	1,859	8,478	8,250	5,047	9,276	11,957	10,847
LSI ICs	-2,205	-1,432	-2,317	-1,870	-387	4,436	2,601	2,566	5,192	7,806	5,444
半導体素子 Discrete semiconductor devices	3,012	2,431	1,593	893	2,221	3,594	4,729	3,543	3,673	5,223	4,448
モジュール Modules	359	-57	-71	-830	576	744	586	-464	356	466	602
その他 Others	-437	-164	-356	-876	-537	187	488	-934	546	-1,383	321
調整額 Adjusted amount	627	509	709	-438	-13	-482	-156	337	-491	-155	30

## セグメント別主要製品 Main products by segment

セグメントの名称 Segment	主な製品及び事業の名称 Main products and business				
LSI ICs	アナログ Analog	ロジック Logic	メモリ Memory	ASIC ASIC	ファウンドリ Foundry
半導体素子 Discrete semiconductor devices	ダイオード Diodes	トランジスタ Transistors	発光ダイオード Light emitting diodes	半導体レーザー など Laser diodes etc.	
モジュール Modules	プリントヘッド Printheads	オプティカル・モジュール Optical modules		パワーモジュール Power modules	
その他 Others	抵抗器 Resistors	タンタルコンデンサ Tantalum capacitors		ライティング(照明) Lightings	

## ※計算式 Formula

	(期初棚卸資産+期末棚卸資産)
■ 棚卸資産回転月数=	(Inventories at the beginning of the nearest quarter + Inventories at the term end)
Inventory turnover	$\frac{\quad}{2}$
	直近3ヶ月の月平均売上
	Average of the nearest 3 months sales of the term
	純資産合計-少数株主持分
■ 自己資本比率=	Total net assets - Minority interests
Equity ratio	$\frac{\quad}{\text{総資産}} \times 100$
	Total Assets
	当期純利益-普通株主に帰属しない金額
■ 1株当たり当期純利益=	Net income - Amount not attributable to common shareholders
Net income per share	$\frac{\quad}{\text{期中平均発行済株式数}}$
	Average number of shares during the period
	純資産の部合計-少数株主持分-普通株主に帰属しない金額
■ 1株当たり純資産=	Total net assets - Minority interests - Amount not attributable to common shareholders
Net assets per share	$\frac{\quad}{\text{期末発行済株式数}}$
	Year-end number of shares outstanding

四半期連結貸借対照表 Consolidated quarterly balance sheets

(百万円/¥million)

年度 Fiscal year ended	'13/3				'14/3				'15/3			
	1Q	2Q	3Q	4Q	1Q	2Q	3Q	4Q	1Q	2Q	3Q	
《資産の部》 《Assets》												
<b>流動資産</b>	<b>412,499</b>	<b>402,357</b>	<b>411,688</b>	<b>423,064</b>	<b>425,998</b>	<b>428,354</b>	<b>449,894</b>	<b>461,745</b>	<b>457,086</b>	<b>493,506</b>	<b>517,281</b>	
<b>Current assets</b>												
現金及び預金 Cash and deposits	225,138	212,434	201,029	224,157	231,359	230,426	251,184	272,982	255,181	280,653	292,405	
受取手形及び売掛金 Notes and accounts receivable - trade	67,877	70,968	68,108	64,960	69,152	74,438	77,070	67,536	72,723	82,353	84,041	
電子記録債権 Electronically recorded monetary claims - operating	-	-	-	463	664	785	1,545	2,214	2,250	2,121	2,261	
有価証券 Securities	9,247	11,135	23,604	15,996	12,666	20,667	14,280	15,282	25,556	21,936	25,159	
商品及び製品 Merchandise and finished goods	23,437	23,272	28,502	30,808	28,348	25,075	24,993	25,533	23,699	24,570	27,357	
仕掛品 Work in process	41,152	41,798	44,104	44,224	43,157	41,355	42,117	39,739	37,951	39,891	40,579	
原材料及び貯蔵品 Raw materials and supplies	28,304	28,134	30,168	28,511	26,910	25,277	26,571	25,761	26,551	28,011	29,507	
前払年金費用 Prepaid pension cost	2,234	2,241	2,214	2,092	2,073	2,052	2,180	-	-	-	-	
繰延税金資産 Deferred tax assets	1,132	1,046	1,022	987	1,090	1,592	1,381	4,170	3,884	4,632	4,770	
未収還付法人税等 Income taxes receivable	3,834	3,035	3,106	3,474	3,435	282	103	269	221	196	281	
その他 Other	10,388	8,611	10,095	7,657	7,420	6,585	8,658	8,475	9,293	9,385	11,172	
貸倒引当金 Allowance for doubtful accounts	-247	-320	-267	-270	-280	-183	-194	-220	-227	-245	-256	
<b>固定資産</b>	<b>292,688</b>	<b>295,405</b>	<b>313,729</b>	<b>275,950</b>	<b>283,986</b>	<b>292,500</b>	<b>305,741</b>	<b>292,661</b>	<b>304,970</b>	<b>320,173</b>	<b>340,520</b>	
<b>Non-current assets</b>												
<b>有形固定資産</b>	<b>242,992</b>	<b>245,968</b>	<b>254,107</b>	<b>213,432</b>	<b>214,654</b>	<b>216,930</b>	<b>223,303</b>	<b>212,297</b>	<b>213,332</b>	<b>224,071</b>	<b>234,599</b>	
<b>Property, plant and equipment</b>												
建物及び構築物 Buildings and structures	207,025	207,583	212,296	207,891	209,864	212,003	216,283	213,747	213,477	218,407	224,236	
機械装置及び運搬具 Machinery, equipment and vehicles	456,542	462,661	488,983	453,506	459,329	459,045	477,339	465,152	468,660	487,017	513,957	
工具、器具及び備品 Tools, furniture and fixtures	41,598	42,954	45,583	42,323	43,647	43,769	45,809	45,585	46,232	47,974	50,846	
土地 Land	79,756	79,820	80,284	74,848	72,649	72,666	73,029	63,960	63,970	64,343	64,874	
建設仮勘定 Construction in progress	18,781	22,186	21,208	19,329	18,345	16,640	15,242	15,828	15,803	18,949	18,936	
減価償却累計額 Accumulated depreciation	-560,711	-569,238	-594,248	-584,465	-589,182	-587,195	-604,399	-591,977	-594,811	-612,621	-638,253	
<b>無形固定資産</b>	<b>10,504</b>	<b>9,562</b>	<b>9,349</b>	<b>3,724</b>	<b>3,615</b>	<b>3,356</b>	<b>3,747</b>	<b>3,005</b>	<b>4,338</b>	<b>4,115</b>	<b>5,759</b>	
<b>Intangible assets</b>												
のれん Goodwill	4,876	4,287	4,205	100	91	83	74	66	58	49	41	
その他 Other	5,627	5,275	5,143	3,624	3,524	3,273	3,672	2,938	4,279	4,065	5,717	
<b>投資その他の資産</b>	<b>39,190</b>	<b>39,873</b>	<b>50,272</b>	<b>58,793</b>	<b>65,715</b>	<b>72,212</b>	<b>78,689</b>	<b>77,359</b>	<b>87,299</b>	<b>91,986</b>	<b>100,161</b>	
<b>Investments and other assets</b>												
投資有価証券 Investment securities	32,618	32,018	36,079	38,489	45,830	52,894	60,887	58,841	62,963	67,083	74,585	
退職給付に係る資産 Net defined benefit asset	-	-	-	-	-	-	-	723	1,401	1,495	1,708	
繰延税金資産 Deferred tax assets	1,594	1,533	1,869	7,352	6,649	6,183	4,839	5,525	5,486	5,508	4,761	
その他 Other	5,510	6,853	12,446	13,056	13,343	13,241	13,067	12,556	17,768	18,248	19,487	
貸倒引当金 Allowance for doubtful accounts	-532	-531	-121	-104	-106	-107	-104	-287	-321	-349	-381	
<b>資産合計</b>	<b>705,187</b>	<b>697,762</b>	<b>725,418</b>	<b>699,014</b>	<b>709,984</b>	<b>720,854</b>	<b>755,636</b>	<b>754,407</b>	<b>762,056</b>	<b>813,679</b>	<b>857,801</b>	
<b>Total assets</b>												

## 四半期連結貸借対照表 Consolidated quarterly balance sheets

(百万円/¥million)

年度 Fiscal year ended	'13/3				'14/3				'15/3		
	1Q	2Q	3Q	4Q	1Q	2Q	3Q	4Q	1Q	2Q	3Q
<b>《負債の部》</b>											
<b>《Liabilities》</b>											
<b>流動負債</b>	<b>63,547</b>	<b>59,488</b>	<b>55,593</b>	<b>55,750</b>	<b>51,029</b>	<b>54,002</b>	<b>54,029</b>	<b>52,954</b>	<b>56,077</b>	<b>68,637</b>	<b>67,803</b>
<b>Current liabilities</b>											
支払手形及び買掛金	20,998	20,583	20,164	17,557	15,572	14,285	12,833	12,324	12,341	14,325	12,157
Notes and accounts payable – trade											
電子記録債務	–	–	–	–	1,871	4,853	7,242	7,065	8,151	9,327	8,678
Electronically recorded obligations – operating											
未払金	23,624	21,386	17,346	18,507	16,305	12,204	12,759	12,595	12,807	14,974	16,740
Accounts payable – other											
未払法人税等	1,837	2,049	2,000	1,348	1,168	4,049	2,293	3,636	2,224	2,658	7,119
Income taxes payable											
繰延税金負債	959	756	878	1,153	622	274	513	45	18	17	16
Deferred tax liabilities											
関係会社整理損失引当金	–	–	–	1,511	339	–	–	–	–	–	–
Provision for loss on liquidation of subsidiaries and affiliates											
事業構造改善引当金	1,038	119	–	–	–	–	–	–	–	–	–
Allowance for restructuring expenses											
災害損失引当金	139	23	14	–	–	–	–	–	–	–	–
Allowance for disaster loss											
その他	14,948	14,569	15,189	15,671	15,149	18,335	18,386	17,285	20,533	27,333	23,090
Other											
<b>固定負債</b>	<b>25,547</b>	<b>23,855</b>	<b>25,785</b>	<b>29,617</b>	<b>30,540</b>	<b>31,673</b>	<b>35,332</b>	<b>38,065</b>	<b>38,124</b>	<b>38,906</b>	<b>43,224</b>
<b>Non-current liabilities</b>											
繰延税金負債	16,504	15,447	17,854	20,152	21,815	23,283	26,987	25,764	26,622	27,354	30,870
Deferred tax liabilities											
退職給付引当金	7,362	6,839	6,732	6,185	6,184	5,937	5,964	–	–	–	–
Liability for retirement benefits											
退職給付に係る負債	–	–	–	–	–	–	–	9,948	8,207	8,489	8,735
Net defined benefit liability											
その他	1,681	1,568	1,198	3,278	2,540	2,452	2,379	2,351	3,295	3,061	3,618
Other											
<b>負債合計</b>	<b>89,095</b>	<b>83,344</b>	<b>81,379</b>	<b>85,367</b>	<b>81,570</b>	<b>85,676</b>	<b>89,361</b>	<b>91,019</b>	<b>94,202</b>	<b>107,543</b>	<b>111,028</b>
<b>Total liabilities</b>											
<b>《純資産の部》</b>											
<b>《Net assets》</b>											
<b>株主資本</b>	<b>726,064</b>	<b>725,881</b>	<b>726,795</b>	<b>671,970</b>	<b>677,132</b>	<b>682,593</b>	<b>690,390</b>	<b>700,250</b>	<b>705,084</b>	<b>719,836</b>	<b>731,747</b>
<b>Shareholders' equity</b>											
資本金	86,969	86,969	86,969	86,969	86,969	86,969	86,969	86,969	86,969	86,969	86,969
Capital stock											
資本剰余金	102,403	102,403	102,403	102,403	102,403	102,403	102,403	102,403	102,403	102,403	102,403
Capital surplus											
利益剰余金	586,776	586,594	587,508	532,683	537,847	543,311	551,132	561,002	565,837	580,594	592,512
Retained earnings											
自己株式	-50,085	-50,085	-50,086	-50,087	-50,088	-50,090	-50,114	-50,125	-50,127	-50,131	-50,137
Treasury shares											
<b>その他の包括利益累計額</b>	<b>-110,266</b>	<b>-111,760</b>	<b>-83,098</b>	<b>-58,700</b>	<b>-49,098</b>	<b>-47,798</b>	<b>-24,528</b>	<b>-37,266</b>	<b>-37,641</b>	<b>-14,139</b>	<b>14,534</b>
<b>Accumulated other comprehensive income</b>											
その他有価証券評価差額金	1,517	878	2,327	4,766	7,124	9,485	14,494	13,347	14,761	18,801	22,734
Valuation difference on available-for-sale securities											
為替換算調整勘定	-111,784	-112,639	-85,425	-63,466	-56,223	-57,284	-39,022	-45,788	-48,320	-28,947	-4,285
Foreign currency translation adjustment											
退職給付に係る調整累計額	–	–	–	–	–	–	–	-4,825	-4,082	-3,993	-3,914
Remeasurements of defined benefit plans											
<b>少数株主持分</b>	<b>294</b>	<b>297</b>	<b>341</b>	<b>377</b>	<b>379</b>	<b>382</b>	<b>412</b>	<b>404</b>	<b>411</b>	<b>438</b>	<b>491</b>
<b>Minority interests</b>											
<b>純資産合計</b>	<b>616,092</b>	<b>614,418</b>	<b>644,039</b>	<b>613,647</b>	<b>628,413</b>	<b>635,178</b>	<b>666,274</b>	<b>663,387</b>	<b>667,854</b>	<b>706,136</b>	<b>746,773</b>
<b>Total net assets</b>											
<b>負債純資産合計</b>	<b>705,187</b>	<b>697,762</b>	<b>725,418</b>	<b>699,014</b>	<b>709,984</b>	<b>720,854</b>	<b>755,636</b>	<b>754,407</b>	<b>762,056</b>	<b>813,679</b>	<b>857,801</b>
<b>Total liabilities and net assets</b>											

## 四半期連結損益計算書 Consolidated quarterly statement of income

(百万円/¥million)

年度 Fiscal Year Ended	'13/3				'14/3				'15/3			
	1Q	2Q	3Q	4Q	1Q	2Q	3Q	4Q	1Q	2Q	3Q	
《営業損益の部》 《Operating revenues and expenses》												
売上高 Net sales	74,330	76,423	70,520	71,136	80,009	87,969	84,221	78,886	88,417	93,845	92,969	
売上原価 Cost of sales	52,728	55,629	50,886	54,030	59,132	60,385	55,641	51,855	59,055	60,044	59,687	
売上総利益 Gross profit	21,601	20,793	19,634	17,105	20,877	27,584	28,580	27,031	29,361	33,801	33,282	
販売費及び一般管理費 Selling, general and administrative expenses	20,244	19,507	20,075	20,228	19,018	19,105	20,329	21,983	20,085	21,844	22,435	
<b>営業利益(-損失)</b> <b>Operating income (loss)</b>	<b>1,357</b>	<b>1,285</b>	<b>-440</b>	<b>-3,123</b>	<b>1,859</b>	<b>8,478</b>	<b>8,250</b>	<b>5,047</b>	<b>9,276</b>	<b>11,957</b>	<b>10,847</b>	
《営業外損益の部》 《Non-operating income and expenses》												
営業外収益 Non-operating income	984	589	5,052	6,138	6,354	180	7,539	-1,472	859	6,424	12,090	
営業外費用 Non-operating expenses	2,114	1,750	-3,815	7	101	28	-6	198	1,695	-1,618	81,517	
<b>経常利益(-損失)</b> <b>Ordinary income (loss)</b>	<b>227</b>	<b>124</b>	<b>8,426</b>	<b>3,007</b>	<b>8,111</b>	<b>8,631</b>	<b>15,795</b>	<b>3,376</b>	<b>8,440</b>	<b>20,000</b>	<b>22,855</b>	
《特別損益の部》 《Extraordinary income and losses》												
特別利益 Extraordinary income	551	2,629	103	620	333	705	292	5,397	0	2	2,559	
特別損失 Extraordinary losses	1,024	1,645	2,899	62,536	203	146	1,030	1,084	38	1,148	248	
税金等調整前四半期純利益(-損失) Income (loss) before income taxes and minority interests	-245	1,108	5,631	-58,908	8,241	9,190	15,058	7,689	8,402	18,853	25,167	
法人税、住民税及び事業税 Income taxes - current	991	2,205	1,310	-102	884	1,543	1,658	1,851	995	6,016	6,167	
過年度法人税等 Income taxes for prior periods	-	-	-	-	-	2,207	97	193	384	-	-	
法人税等調整額 Income taxes - deferred	-1,250	-918	1,769	-3,995	566	-27	3,309	-4,226	251	-1,932	2,211	
法人税等合計 Total income taxes	-259	1,286	3,079	-4,098	1,451	3,722	5,064	-2,182	1,631	4,084	8,378	
少数株主損益調整前四半期純利益(-損失) Income (loss) before minority interests	13	-178	2,551	-54,810	6,789	5,467	9,993	9,871	6,770	14,769	16,788	
少数株主利益 Minority interests in income	2	3	19	14	9	3	15	2	6	12	20	
<b>四半期純利益(-損失)</b> <b>Net income (loss)</b>	<b>10</b>	<b>-182</b>	<b>2,531</b>	<b>-54,824</b>	<b>6,780</b>	<b>5,463</b>	<b>9,977</b>	<b>9,869</b>	<b>6,764</b>	<b>14,756</b>	<b>16,768</b>	

## 四半期連結包括利益計算書 Consolidated quarterly statement of comprehensive income

<b>少数株主損益調整前四半期純利益(-損失)</b> <b>Income (loss) before minority interests</b>	<b>13</b>	<b>-178</b>	<b>2,551</b>	<b>-54,810</b>	<b>6,789</b>	<b>5,467</b>	<b>9,993</b>	<b>9,871</b>	<b>6,770</b>	<b>14,769</b>	<b>16,788</b>
その他有価証券評価差額金 Valuation difference on available-for-sale securities	-2,262	-639	1,449	2,438	2,358	2,360	5,008	-1,146	1,413	4,041	3,933
為替換算調整勘定 Foreign currency translation adjustment	-12,701	-857	27,238	21,981	7,239	-1,063	18,275	-6,776	-2,528	19,386	24,696
退職給付に係る調整額 Remeasurements of defined benefit plans, net of tax	-	-	-	-	-	-	-	-	143	89	79
<b>その他の四半期包括利益合計</b> <b>Total other comprehensive income</b>	<b>-14,964</b>	<b>-1,495</b>	<b>28,688</b>	<b>24,418</b>	<b>9,597</b>	<b>1,298</b>	<b>23,284</b>	<b>-7,923</b>	<b>-970</b>	<b>23,515</b>	<b>28,707</b>
<b>四半期包括利益</b> <b>Comprehensive income</b>	<b>-14,950</b>	<b>-1,674</b>	<b>31,239</b>	<b>-30,391</b>	<b>16,387</b>	<b>6,766</b>	<b>33,277</b>	<b>1,949</b>	<b>5,800</b>	<b>38,285</b>	<b>45,497</b>
親会社株主に係る四半期包括利益 Comprehensive income attributable to owners of parent	-14,949	-1,676	31,194	-30,426	16,382	6,763	33,247	1,958	5,790	38,259	45,442
少数株主に係る四半期包括利益 Comprehensive income attributable to minority interests	-1	1	44	37	4	3	29	-7	9	27	54