

# At a Glance

ROHM offers a wide range of products, from ICs and discrete semiconductor devices to modules and resistors, but ROHM focuses primarily on power and analog semiconductors, which capitalize on the company's vertical integration as an integrated device manufacturer (IDM)\*. Society and customers have ever-higher expectations that such semiconductors will play a key role in the drive for decarbonization and energy saving, and we foresee that the demand for them will continue to grow due to progress of electrification, especially in the automotive market. ROHM will continue to develop and offer power and analog devices to satisfy these needs, and will contribute to solving social problems by helping its customers for energy savings and miniaturization of their products.

\* Explained in the Glossary

## ROHM's Focus Areas: Power and Analog Technologies

### Power

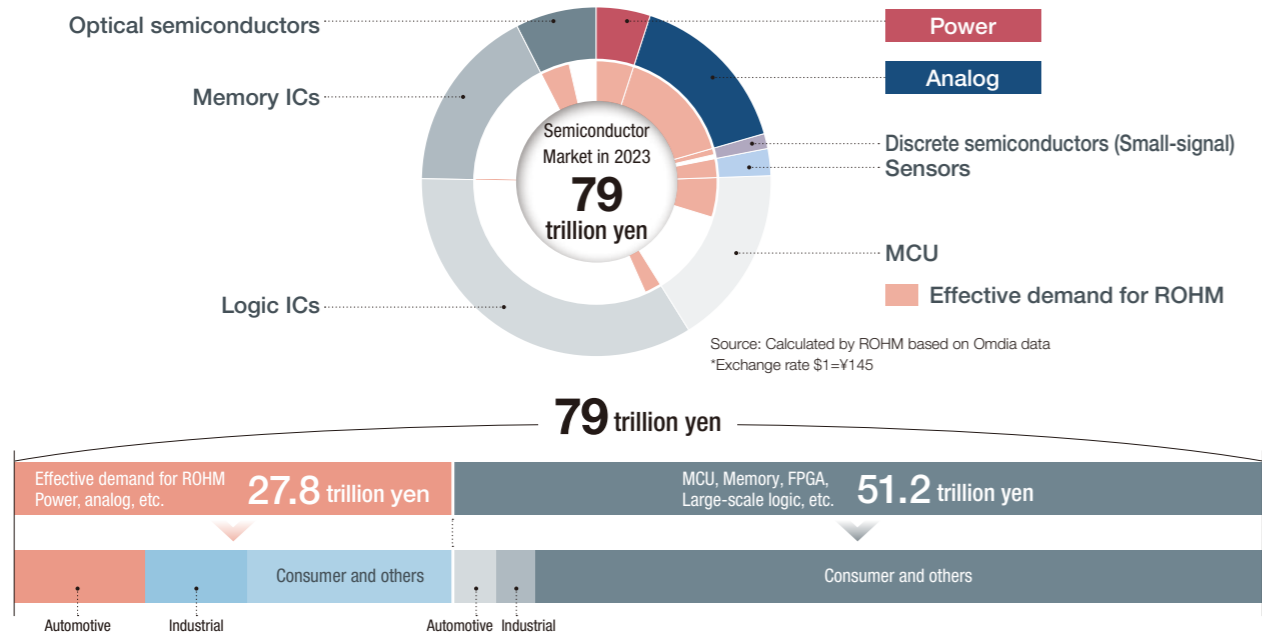
Silicon carbide (SiC) power devices can achieve significantly lower loss and miniaturization compared to conventional silicon (Si) semiconductors. Amid ever-growing needs for energy savings, ROHM has been a global pioneer in the development and enhancement of its SiC power devices lineup, which has been broadly adopted in a range of applications, especially in the automotive and industrial equipment markets.

We will continue to propose optimal power solutions to our customers by integrating our device development and module technologies, not only for SiC power devices, but also for conventional Si power devices and other electronic components.

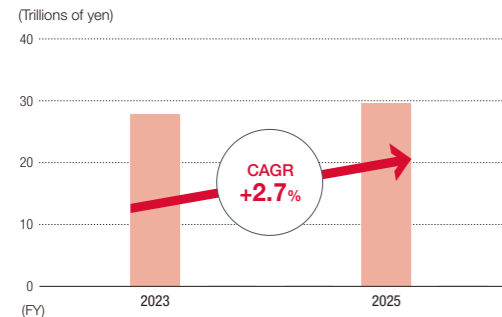
### Analog

Analog technologies are elemental technologies that process continuously changing information as electrical signals. These are widely applied to power supply control circuits that support the stable operation of electronic equipment, motors, and more. Electronic equipment demand will continue its dramatic growth, including the use of data through IoT and artificial intelligence (AI) and the expansion of autonomous driving. The analog semiconductors used in this equipment are expected to achieve even higher performance, energy savings, and miniaturization. ROHM is able to meet customer needs through optimal designs by engineers with expertise in analog technology, and its advanced elemental and integral technologies cultivated over many years.

## Market size of ROHM's target: power and analog (effective demand for ROHM)

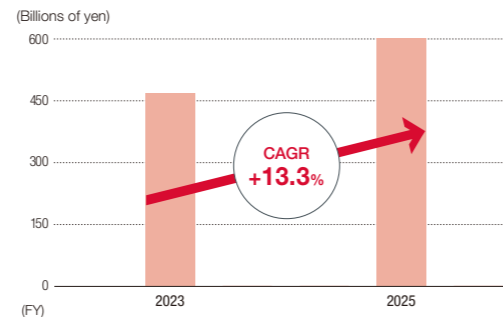


### Effective Demand for ROHM



ROHM products with effective demand: discrete, analog, etc.

### Net Sales of ROHM



Source: Calculated by ROHM based on Omdia data

\*Exchange rate \$1=¥145

## ROHM's Position Power & analog device manufacturers ranked by share of worldwide sales (2023)

As part of its strategy for becoming a major global player in FY2030, in the field of power and analog semiconductors ROHM is aiming to become one of the top 10 manufacturers worldwide, with sales of 1 trillion yen. ROHM aims to reach this goal mainly through organic growth, yet it is also giving consideration to strategic alliances and M&A and is increasing its operating capital in order to reach its goal.

(Millions of U.S. dollars)

2023 Rank	2022 Rank	Company Name	2023 Sales	2022 Sales	'22-'23 Growth	2023 Share
1	1	Texas Instruments	12,916	15,416	-16.2%	11.4%
2	2	Analog Devices	10,837	11,142	-2.7%	9.6%
3	4	Infineon Technologies	9,535	8,707	9.5%	8.4%
4	3	Qualcomm	8,067	10,302	-21.7%	7.1%
5	5	STMicroelectronics	7,915	7,007	13.0%	7.0%
6	7	onsemi	5,311	5,136	3.4%	4.7%
7	10	NXP	4,313	4,425	-2.5%	3.8%
8	6	Renesas Electronics Corporation	4,243	5,158	-17.7%	3.8%
9	8	Skyworks Solutions	3,855	4,447	-13.3%	3.4%
10	9	MediaTek	3,827	4,441	-13.8%	3.4%
11	11	Qorvo	2,820	3,272	-13.8%	2.5%
12	12	Broadcom Limited	2,564	2,551	0.5%	2.3%
13	15	Marvell Technology Group	1,965	1,882	4.4%	1.7%
14	14	Microchip Technology	1,909	1,883	1.4%	1.7%
15	16	ROHM Semiconductor	1,852	1,825	1.5%	1.6%
16	17	Monolithic Power Systems	1,821	1,794	1.5%	1.6%
17	13	Cirrus Logic	1,741	1,961	-11.2%	1.5%
18	18	Mitsubishi Electric	1,703	1,497	13.8%	1.5%
19	20	Fuji Electric	1,427	1,267	12.6%	1.3%
20	23	Robert Bosch	1,306	1,044	25.1%	1.2%

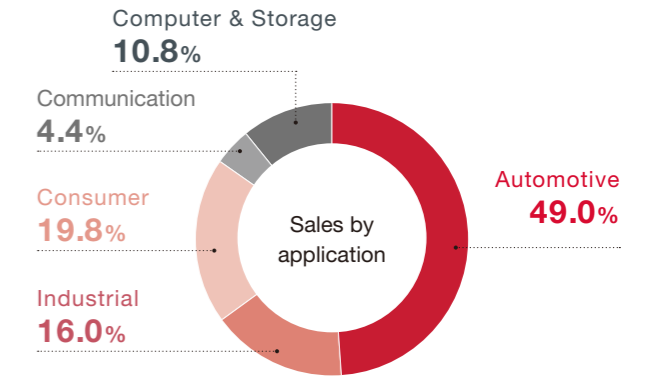
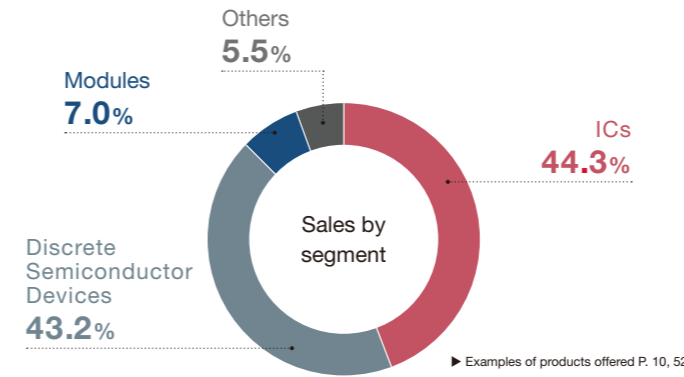
Source: Competitive Landscaping Tool CLT, Annual 2024

Power & Analog: Bipolar PT, FET PT, IGBT PT, Rectifier & Power Diodes, Thyristor, Amplifier/Comparator, Data Converters, Interface, Voltage Regulator/Reference, Analog ASIC, Analog ASSP

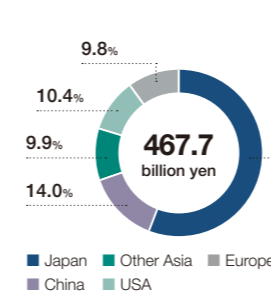
## FY2023 Results

Net sales **467.7** billion yen

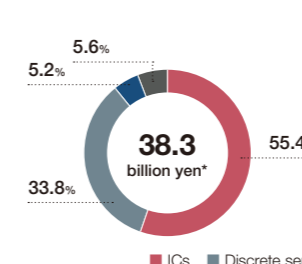
Sales composition



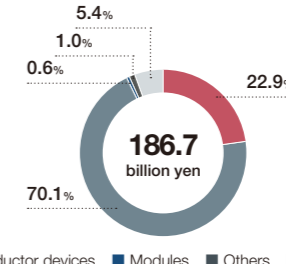
Sales by region



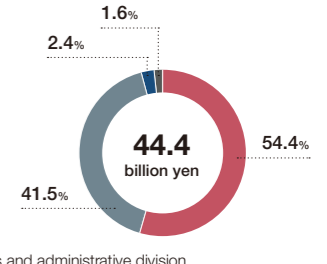
Operating profit



Capital expenditures



R&D expenses



\* Operating profit for the period was 43.3 billion yen, but we are showing the details of 38.3 billion yen excluding general and administrative expenses and the settlement adjusted amount.