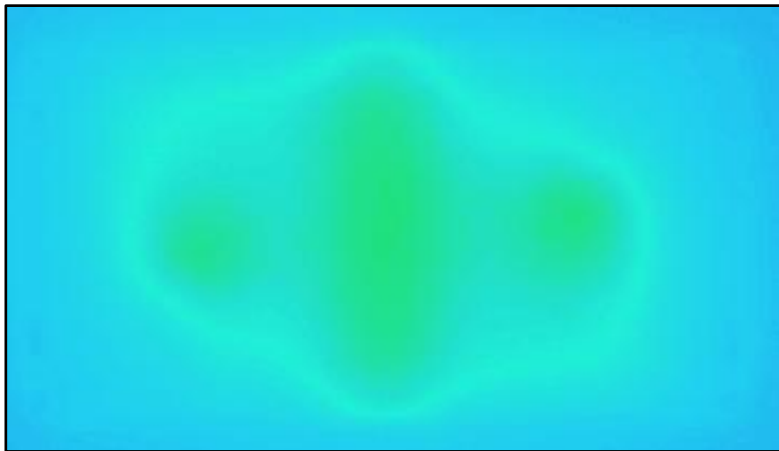


■ Characteristic comparison

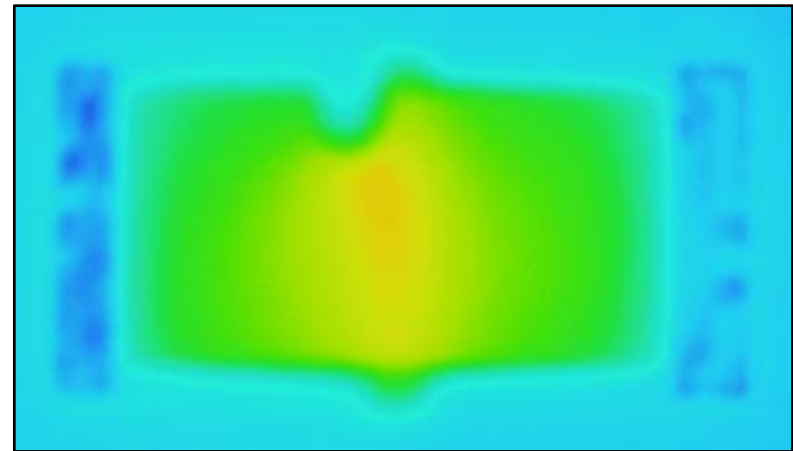
GMR series has good heat dissipation and over current characteristic.

<GMR100/10mΩ>



<107°C at 3W>

<Competitor/10mΩ>

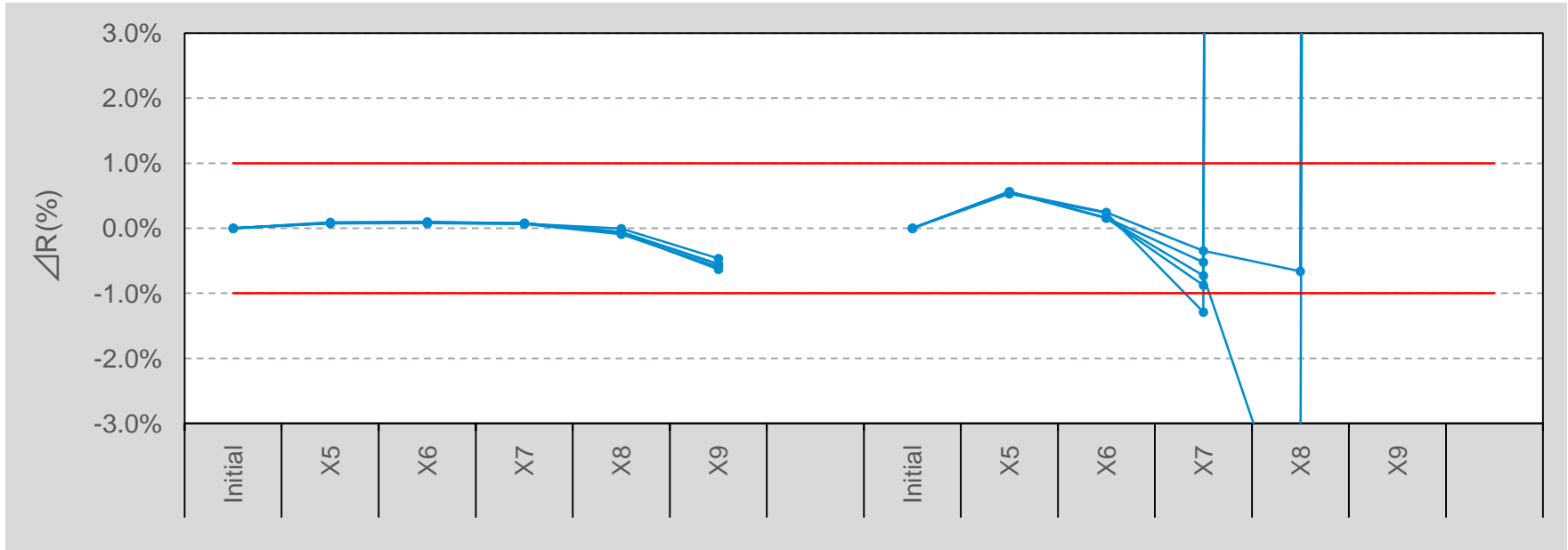


<140°C at 3W>

Overload

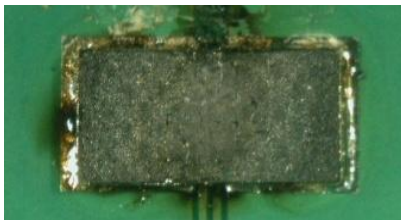
<<Test board>>

Board: FR-4 / Land pattern: ROHM standard / Board thickness: 1.6mm / Cu foil thickness: 70 μ m

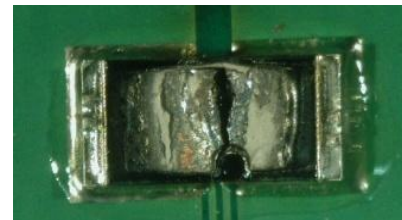


Appearance after overload test

<GMR100>



<Competitor>



◆ Line up comparison

Maker		Company A	Company B
Appearance			
2817 5W	GMR320	SMT	WSH2818
2512 3W	GMR100	SMS	WSL2512
2010 2W	GMR50	SMP	WSL2010