



# ROHM Group Corporate Profile

2020 / 2021

# Company Mission

---

The ROHM Group has communicated the Company Mission to its employees since its establishment in order to become a company that can be trusted and relied upon by society.

Quality is our top priority at all times.

Our objective is to contribute to the advancement and progress of our culture through a consistent supply, under all circumstances, of high quality products in large volumes to the global market.



ROHM Co., Ltd.  
President and Chief Executive Officer  
Isao Matsumoto



Under the leadership and guidance of our founder Kenichiro Sato, who passed away in January 2020, and for more than 50 years since ROHM was founded, quality has always been our top priority. The company has grown steadily after facing a number of challenges – including entering the semiconductor business – while staying true to our corporate objective of contributing to the advancement of culture.

In recent years, issues related to the environment, resources, and energy have taken on greater urgency, impacting not only various markets but society as a whole, while the automotive industry is seeing major changes, including the evolution of AI and technological innovation for achieving autonomous driving. Furthermore, in early 2020 the world experienced an unprecedented pandemic in the form of the novel coronavirus, and in May I was appointed president.

To respond to these changes and create products that can help resolve social issues, we are accelerating and promoting reform utilizing the indomitable spirit inherited from our founder, which will allow us to improve business performance.

And to achieve our next growth cycle, we look towards management measures that include focusing on the automotive/industrial equipment sectors along with overseas markets while strengthening our development capabilities centered on analog power – together with a manufacturing system to support it.

As an officer in charge, I have implemented measures and enhancements related to quality, safety, and production, but the effects of the coronavirus have exposed challenges within the supply chain of the ROHM Group that call for manufacturing reforms, such as optimizing production systems and reducing labor. At the same time, we will promote a strong BCM system, including a review of work styles.

We will overcome these difficulties as ONE ROHM, a unified ROHM Group working together, infused with a venturesome spirit and unwavering dedication.

Thank you and I look forward to your continued support in the future.





# Quality

ROHM strives for "Quality First" as our Company Mission. Quality is incorporated into every process of our vertically integrated production system, from ingot pulling to finished products, to achieve the industry's best manufacturing facilities.

## High Quality

In pursuit of "Quality First," we are engaged in activities to enhance quality in all processes throughout the entire Group, from development and production to marketing and services.

## Stable Supply

We deliver a long-term, stable supply to enable worry-free use of our products, through utilizing an integrated production system that is less susceptible to external factors.

## Vertically Integrated Production System

### Raw Materials

Wafer production from silicon ingot pulling



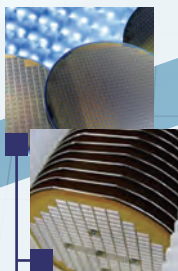
Raw silicon

### In-House Photo Mask

Pursuing high quality through integrated quality control, from IC chip design layout through to photomask production



Photo Mask



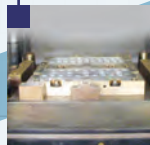
Wafer Process

### In-House Dies and Lead Frames

To ensure the highest levels of quality, all lead frames and dies for lead frame punching and molding are developed and produced in-house



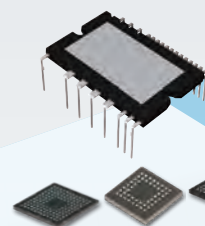
Frame



Die / Mold



Assembly Line



Packaging



Module

### Cutting-Edge Packages

Our overseas production facilities leverage the latest assembly technologies to deliver unmatched quality, including SiP, CSP, QFN, and BGA

### Wafer Process

Developing innovative devices from the wafer process, based around our production facilities in Japan

### In-House Production System

All production equipment is developed in-house, making it possible to flexibly and precisely meet customer needs.

All production equipment developed in-house ▶



**SiCrystal**  
A ROHM Group Company

### SiC Single-Crystal Wafer Manufacturer

SiCrystal, a German SiC single-crystal wafer manufacturer, became a member of the ROHM Group in 2009



SiCrystal

**Si**  
Silicon

**SiC**  
Silicon Carbide



Silicon Ingot



Wafer

CAD

# Technology

The ROHM Group offers a wide variety of products, ranging from ICs and discrete devices to modules and passive components that contribute to solving social issues related to energy conservation, safety, and security.



## Power Management / Power Supply ICs



PMICs  
(System Power  
Management ICs)



High-Voltage  
DC/DC Converters

## Driver ICs



High-Voltage Fan  
Motor Drivers



Isolated  
Gate Drivers

## General-Purpose ICs



Memory, Operational Amplifiers, Comparators  
and Voltage Detectors (Reset ICs)

## SiC (Silicon Carbide) Power Devices



SiC Schottky  
Barrier Diodes



SiC MOSFETs



Full SiC  
Power Modules

## Transistors



Bipolar transistors, MOSFETs, IGBTs, etc.

## Diodes



TVS diodes, Schottky barrier diodes,  
fast recovery diodes, etc.

## LEDs / Laser Diodes



Compact Chip  
LEDs

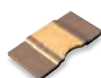


High output  
LEDs



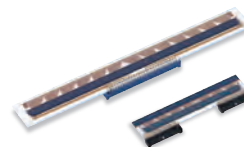
Multi-Beam  
Lasers

## Resistors



High power shunt resistors,  
high reliability resistors, etc.

## Thermal Printheads



Thermal printheads  
for receipt labels



Ultra-high speed  
thermal printheads  
for industrial equipment

## Wireless Communication Devices



Sub-GHz Wireless  
Communication ICs



Wi-SUN  
Modules

## Sensor Devices



Accelerometers



ROHM Sensor Medal

## Microcontrollers



16-bit Low-Power  
Microcontrollers



# Focus Areas

We intend to accelerate technological development focusing on three product areas: power, analog, and standard products.

## Power

In addition to power devices utilizing industry-leading SiC technology, our lineup includes control ICs, power diodes, shunt resistors, and other peripheral devices that maximize device performance.

### SiC Power Device Usage Examples

Chargers for Electric Vehicles



Power Conditioners for Solar and Wind Power

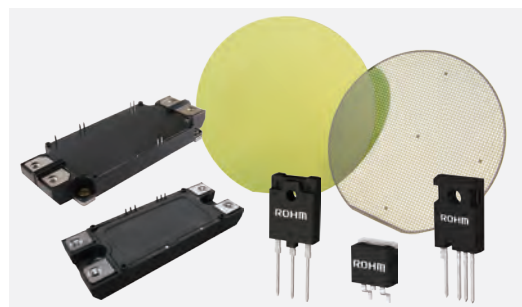


Power Supplies for Data Centers

Main EV Inverters



Large Industrial Motors



ROHM's industry-leading SiC Power Devices are increasingly used across a variety of applications.

## Analog

ROHM produces some of the world's best analog ICs by combining three core analog technologies covering circuit configuration, layout, and processes. These make it possible to dramatically reduce both energy consumption and size in automotive and industrial applications.

ROHM's revolutionary **Nano Series** of power supplies combine the latest proprietary analog technologies

- ICs equipped with "Nano Pulse Control™" ultra-high-speed control technology

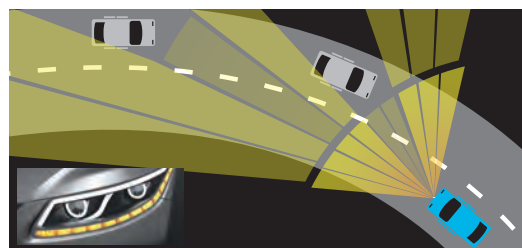
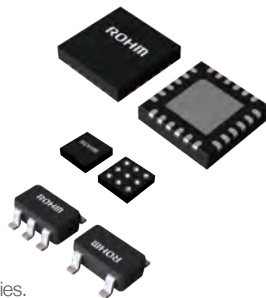
Extremely narrow pulse widths enable stable control, contribute to greater miniaturization in cars and industrial equipment, and allow users to achieve simpler systems.

- ICs equipped with "Nano Energy™" ultra-low current consumption technology

Reducing the power consumption of the IC itself allows for longer operating times in devices equipped with compact batteries.

- ICs equipped with ultra-stable Nano Cap™ control technology

Minimizing unnecessary parasitic factors makes it possible to reduce the capacitance along with the number of capacitors required by power supply circuits.



### LED Driver ICs (supports ABD\*)

Detects oncoming vehicles within the beam range and automatically adjusts the beam pattern using light distribution control when driving with high beams. This contributes to increased driver safety by selectively blocking light, preventing it from shining onto preceding or oncoming cars.

\*ADB (Adaptive Driving Beam): Headlamp capable of variable light distribution

## Standard Products

As the world's top supplier of small-signal transistors and diodes, ROHM offers high-quality products backed by extensive experience and technology. We continue to improve our production capabilities through capital investment, to ensure stable long-term supply in the automobile and industrial equipment markets where high reliability is required.

To quickly deliver products and solutions that meet the needs of customers in different regions, the ROHM Group has established Technical Centers in various locations throughout the world that offer technical support.

Kyoto	Yokohama	Santa Clara	Dusseldorf	Beijing
Shanghai	Shenzhen	Taipei	Seoul	Bangalore



# CSR/CSV

The ROHM Group contributes to the continued growth of the Group and healthy development of society by conducting business activities in accordance with the goals and policies outlined in our Company Mission and Basic Management Policy.



## CSR and CSV compromise the core of our business activities

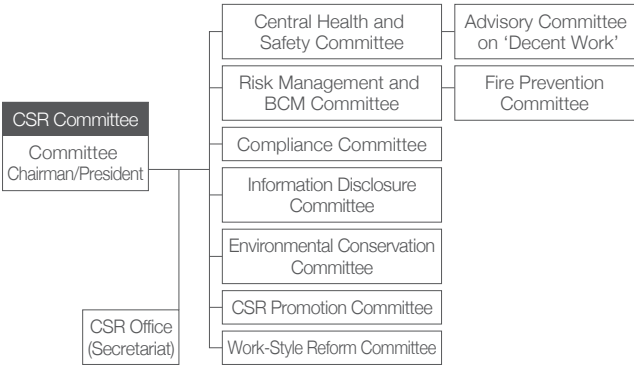
The ROHM Group's Company Mission and Basic Management Policy are based on a strong desire to enrich society through business. These provide the foundation for CSV initiatives that solve social issues through CSR in line with social requirements and international norms while allowing us to meet the expectations of our shareholders.



## System for Promoting CSR/CSV

The ROHM Group has formed a CSR committee consisting of all board members as well as directors with the equivalent authority, in order to take responsibility for factors that are crucial to business, such as the environment, society, and governance. Furthermore, the company's seven subsidiary committees specify important issues in each field and tackle the issues flagged using the PDCA cycle method. The committees then assess the suitability of those issues through management system certifications, while simultaneously working on improving accuracy of engagement.

### Promotional Organization at ROHM Headquarters



## CSR/CSV Initiatives

The ROHM Group aims for continuous growth of both the company and society. For that reason, it is important to create shared value (CSV) between society and businesses by tackling the SDGs through business activities. The ROHM Group has engaged in dialog with various stakeholders, and has decided on six key CSR issues to engage in. These key issues serve as a central focus when engaging in CSR/CSV, and contribute to realizing a sustainable society.



<https://csr.rohm.com>

\*ROHM Group CSR information can be found on our website. The information provided online features a wider variety of information than this pamphlet and includes the latest updates.



The ROHM Group's CSR Priority Issues		SUSTAINABLE DEVELOPMENT GOALS			
CSR Priority Issue	Related SDGs	3	7	12	17
Resolve social issues through innovative products and technology	3, 7, 12, 17	3	7	12	17
Ensure a stable supply of high-quality products	8, 9, 12, 17	8	9	12	17
Develop a global workforce that can contribute to the international community	5, 8, 10, 17	5	8	10	17
Give due consideration to labor practices and respect human rights in the value chain	5, 8, 10, 16, 17	5	8	10	16, 17
Carry out business activities that respect the global environment	6, 7, 13	6	7	13	
Contribute to local communities through business activities	4, 11, 17	4	11	17	



[www.rohm.com](http://www.rohm.com)

## Corporate Data

Registered Name	ROHM Co., Ltd.
Address (HQ)	21 Saiin Mizosaki-cho, Ukyo-ku, Kyoto 615-8585 Japan Tel: +81-75-311-2121 Fax: +81-75-315-0172
Establishment	September 17, 1958
Paid-in Capital	¥86,969 million (Current as of March 31, 2020)
President	Isao Matsumoto, President and CEO
Net Sales	Consolidated ¥362,885 million year ended March 31, 2020
Number of Employees	Consolidated 22,191 (Current as of March 31, 2020)



This is our **Communication on Progress** in implementing the principles of the **United Nations Global Compact** and supporting broader UN goals.

We welcome feedback on its contents.

